

# ABflo® 680 $\beta$ -Actin Mouse mAb

Catalog No.: AC069NFB

## Basic Information

### Observed MW

42 kDa

### Calculated MW

42kDa

### Category

Loading control antibody

### Applications

WB

### Cross-Reactivity

Human, Mouse, Rat

### CloneNo number

AMC0001R

### Conjugate

ABflo® 680. Ex:679nm. Em:700nm.

## Recommended Dilutions

<b>WB (Fluorescence)</b>	1:5000-20000
------------------------------	--------------

## Background

This gene encodes one of six different actin proteins. Actins are highly conserved proteins that are involved in cell motility, structure, integrity, and intercellular signaling. The encoded protein is a major constituent of the contractile apparatus and one of the two nonmuscle cytoskeletal actins that are ubiquitously expressed. Mutations in this gene cause Baraitser-Winter syndrome 1, which is characterized by intellectual disability with a distinctive facial appearance in human patients. Numerous pseudogenes of this gene have been identified throughout the human genome.

## Immunogen Information

### Gene ID

60

### Swiss Prot

P60709

### Immunogen

Recombinant protein (or fragment). This information is considered to be commercially sensitive.

### Synonyms

BRWS1; PS1TP5BP1; ABflo® 680  $\beta$ -Actin

## Contact

☎ | 400-999-6126

✉ | [cn.market@abclonal.com.cn](mailto:cn.market@abclonal.com.cn)

🌐 | [www.abclonal.com.cn](http://www.abclonal.com.cn)

## Product Information

### Source

Mouse

### Isotype

IgG1, Lambda

### Purification

Affinity purification

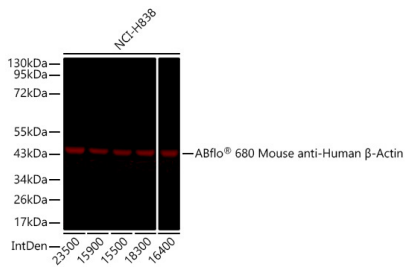
### Storage

Store at 4°C. Avoid freeze / thaw cycles.

Buffer: PBS, pH7.3.

## Validation Data

---



Western blot analysis of lysates from NCI-H838 cells using ABflo® 680 β-Actin Mouse mAb (AC069NFB) at 1:10000 dilution incubated overnight at 4°C.  
Lysates/proteins: 30 µg per lane.  
Blocking buffer: 3% nonfat dry milk in TBST.