

ABflo® 700 GAPDH Mouse mAb

Catalog No.: AC071NFB

Basic Information

Observed MW

36 kDa

Calculated MW

36kDa

Category

Loading control antibody

Applications

WB

Cross-Reactivity

Human, Mouse, Rat

CloneNo number

AMC0062R

Conjugate

ABflo® 700. Ex:690nm. Em:713nm.

Recommended Dilutions

WB (Fluorescence) 1:10000 - 1:30000

.Please optimize the concentration based on your specific assay requirements. For high-ratio antibody dilutions (≥1:10000) a sequential dilution method is strongly recommended to ensure measurement accuracy.

Background

This gene encodes a member of the glyceraldehyde-3-phosphate dehydrogenase protein family. The encoded protein has been identified as a moonlighting protein based on its ability to perform mechanistically distinct functions. The product of this gene catalyzes an important energy-yielding step in carbohydrate metabolism, the reversible oxidative phosphorylation of glyceraldehyde-3-phosphate in the presence of inorganic phosphate and nicotinamide adenine dinucleotide (NAD). The encoded protein has additionally been identified to have uracil DNA glycosylase activity in the nucleus. Also, this protein contains a peptide that has antimicrobial activity against *E. coli*, *P. aeruginosa*, and *C. albicans*. Studies of a similar protein in mouse have assigned a variety of additional functions including nitrosylation of nuclear proteins, the regulation of mRNA stability, and acting as a transferrin receptor on the cell surface of macrophage. Many pseudogenes similar to this locus are present in the human genome. Alternative splicing results in multiple transcript variants.

Immunogen Information

Gene ID

2597

Swiss Prot

P04406

Immunogen

Recombinant protein (or fragment). This information is considered to be commercially sensitive.

Synonyms

G3PD; GAPD; HEL-S-162eP; ABflo® 700 GAPDH

Product Information

Source

Mouse

Isotype

IgG1, Kappa

Purification

Affinity purification

Storage

Store at 4°C. Avoid freeze.

Buffer: PBS with 0.2% BSA, 0.09% sodium azide, pH7.3.

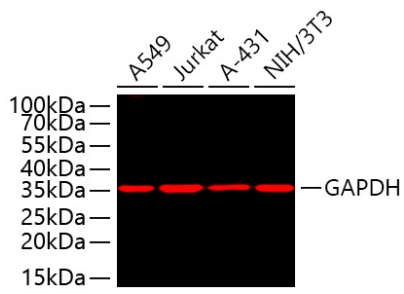
Contact

 | 400-999-6126

 | cn.market@abclonal.com.cn

 | www.abclonal.com.cn

Validation Data



Western blot analysis of various lysates using ABflo® 700 GAPDH Mouse mAb (AC071NFB) at 1:10000 dilution incubated overnight at 4°C.

Lysates/proteins: 30 µg per lane.

Blocking buffer: 3% nonfat dry milk in TBST.