

Rabbit anti TAP-Tag pAb

Catalog No.: AE015

Basic Information

Observed MW

Refer to Figures

Calculated MW

48kDa

Category

Tag antibody

Applications

WB,IP

Cross-Reactivity

Species independent

Background

Protein tags are peptide sequences genetically grafted onto a recombinant protein. Often these tags are removable by chemical agents or by enzymatic means, such as proteolysis or intein splicing. Tags are attached to proteins for various purposes. Epitope tags are short peptide sequences which are chosen because high-affinity antibodies can be reliably produced in many different species. These are usually derived from viral genes, which explain their high immunoreactivity. Epitope tags include V5-tag, Myc-tag, HA-tag and NE-tag. These tags are particularly useful for western blotting, immunofluorescence and immunoprecipitation experiments, although they also find use in antibody purification.

Recommended Dilutions

WB 1:1000 - 1:5000

IP 1:100 - 1:500

Immunogen Information

Gene ID

Swiss Prot

Immunogen

A synthetic peptide of TAP epitope

Synonyms

TAP;TAP tag;TAP-tag

Contact

☎ | 400-999-6126

✉ | cn.market@abclonal.com.cn

🌐 | www.abclonal.com.cn

Product Information

Source

Rabbit

Isotype

IgG

Purification

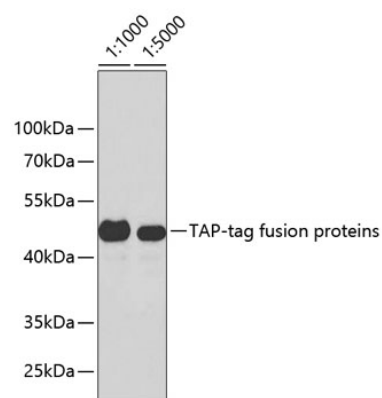
Affinity purification

Storage

Store at -20°C. Avoid freeze / thaw cycles.

Buffer: PBS with 0.02% sodium azide, 50% glycerol, pH7.3.

Validation Data



Western blot analysis of lysates from fusion proteins, using Rabbit anti TAP-Tag pAb (AE015).
Secondary antibody: HRP Goat Anti-Rabbit IgG (H+L) (AS014) at 1:10000 dilution.
Lysates/proteins: 25µg per lane.
Blocking buffer: 3% nonfat dry milk in TBST.