

# HRP-conjugated Mouse anti Myc-Tag mAb

Catalog No.: AE026

5 Publications

## Basic Information

**Observed MW**

55 kDa/58 kDa

**Calculated MW****Category**

Tag antibody

**Applications**

WB, ELISA

**Cross-Reactivity**

Species independent

**CloneNo number**

AMC0048

**Conjugate**

HRP

## Background

Protein tags are peptide sequences genetically grafted onto a recombinant protein. Often these tags are removable by chemical agents or by enzymatic means, such as proteolysis or intein splicing. Tags are attached to proteins for various purposes. Epitope tags are short peptide sequences which are chosen because high-affinity antibodies can be reliably produced in many different species. These are usually derived from viral genes, which explain their high immunoreactivity. Epitope tags include V5-tag, Myc-tag, HA-tag and NE-tag. These tags are particularly useful for western blotting, immunofluorescence and immunoprecipitation experiments, although they also find use in antibody purification.

## Recommended Dilutions

**WB** 1:5000 - 1:20000**ELISA** Recommended starting concentration is 1 µg/mL. Please optimize the concentration based on your specific assay requirements.

## Immunogen Information

**Gene ID****Swiss Prot****Immunogen**

A synthetic peptide corresponding to Myc tag.

**Synonyms**

Myc;Myc tag;Myc-tag

## Contact

 | 400-999-6126 | [cn.market@abclonal.com.cn](mailto:cn.market@abclonal.com.cn) | [www.abclonal.com.cn](http://www.abclonal.com.cn)

## Product Information

**Source**

Mouse

**Isotype**

IgG1

**Purification**

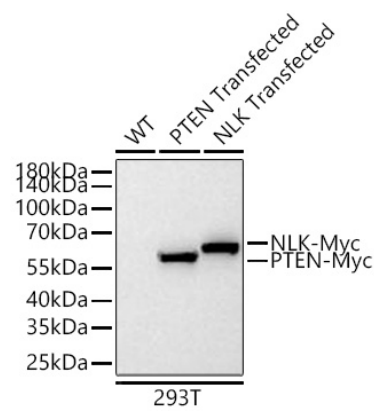
Affinity purification

**Storage**

Store at -20°C. Avoid freeze / thaw cycles.

Buffer: PBS with 0.05% proclin300, 50% glycerol, pH7.3.

Validation Data



Western blot analysis of lysates from wild type (WT) and 293F cells transfected with NLK-Myc-Tag, 293F cells transfected with PTEN-Myc-Tag using HRP-conjugated Mouse anti Myc-Tag mAb (AE026) at 1:5000 dilution incubated overnight at 4°C. Lysates/proteins: 20 µg per lane. Blocking buffer: 3% nonfat dry milk in TBST. Detection: ECL Basic Kit (RM00020). Exposure time: 1 s.