

Rabbit anti His-tag mAb

Catalog No.: AE086

6 Publications

Basic Information

Observed MW

16kDa

Calculated MW

Category

Tag antibody

Applications

WB,IF/ICC,IP,ELISA

Cross-Reactivity

Species independent

CloneNo number

ARC2696

Background

Consecutive histidine residues (usually 6 to 10 in length) are often inserted into the amino acid sequences of recombinant proteins. The resulting His-tagged proteins can be detected by using His antibodies.

Recommended Dilutions

WB 1:10000 - 1:40000

IF/ICC 1:50 - 1:200

IP 0.5µg-4µg antibody for
200µg-400µg extracts of
whole cells

ELISA Recommended starting
concentration is 1 µg/mL.
Please optimize the
concentration based on
your specific assay
requirements.

Immunogen Information

Gene ID

Swiss Prot

Immunogen

A synthetic peptide corresponding to His tag. The antibody may cross-react with a protein of unknown origin ~60kDa

Synonyms

His;His tag;His-tag

Contact

☎ | 400-999-6126

✉ | cn.market@abclonal.com.cn

🌐 | www.abclonal.com.cn

Product Information

Source

Rabbit

Isotype

IgG

Purification

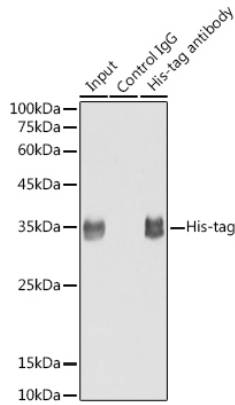
Affinity purification

Storage

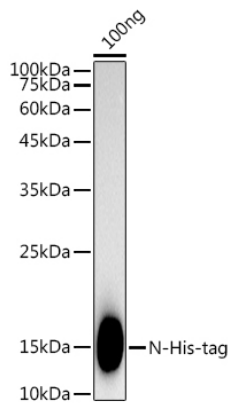
Store at -20°C. Avoid freeze / thaw cycles.

Buffer: PBS with 0.05% proclin300,0.05% BSA,50% glycerol,pH7.3.

Validation Data



Immunoprecipitation analysis of 300 μ g extracts of 293T cells using 3 μ g His-tag antibody (AE086). Western blot was performed from the immunoprecipitate using His-tag antibody (AE086) at a dilution of 1:30000.



Western blot analysis of lysates from His Protein, using Rabbit anti His-tag mAb (AE086) at 1:5000 dilution.

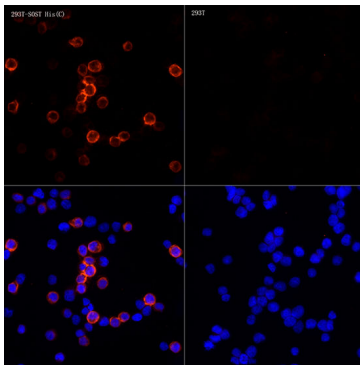
Secondary antibody: HRP-conjugated Goat anti-Rabbit IgG (H+L) (AS014) at 1:10000 dilution.

Lysates/proteins: 25 μ g per lane.

Blocking buffer: 3% nonfat dry milk in TBST.

Detection: ECL Basic Kit (RM00020).

Exposure time: 10s.



Immunofluorescence analysis of 293T-SOST His(C) and 293T cells using Rabbit anti His-tag mAb (AE086) at dilution of 1:200 (40x lens). Secondary antibody: Cy3-conjugated Goat anti-Rabbit IgG (H+L) (AS007) at 1:500 dilution. Blue: DAPI for nuclear staining.