

# HRP-conjugated Rabbit anti His-Tag mAb

Catalog No.: AE104

2 Publications

## Basic Information

### Observed MW

17kDa(NPPA-His)/35kDa[EPCAM-His]

### Calculated MW

### Category

Tag antibody

### Applications

WB,ELISA

### Cross-Reactivity

Species independent

### CloneNo number

ARC2696-HRP

### Conjugate

HRP

## Background

Consecutive histidine residues (usually 6 to 10 in length) are often inserted into the amino acid sequences of recombinant proteins. The resulting His-tagged proteins can be detected by using His antibodies.

## Recommended Dilutions

**WB** 1:2000 - 1:10000

**ELISA** Recommended starting concentration is 1 µg/mL. Please optimize the concentration based on your specific assay requirements.

## Immunogen Information

### Gene ID

### Swiss Prot

### Immunogen

A synthetic peptide corresponding to His tag. The antibody may cross-react with a protein of unknown origin ~60-70kDa.

### Synonyms

His;His tag;His-tag

## Contact

☎ | 400-999-6126

✉ | [cn.market@abclonal.com.cn](mailto:cn.market@abclonal.com.cn)

🌐 | [www.abclonal.com.cn](http://www.abclonal.com.cn)

## Product Information

### Source

Rabbit

### Isotype

IgG2B,Kappa

### Purification

Affinity purification

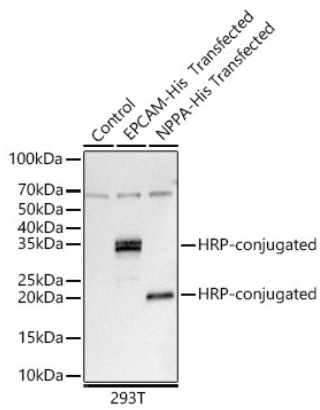
### Storage

Store at -20°C. Avoid freeze / thaw cycles.

Buffer: PBS with 0.03% proclin300,50% glycerol,pH7.3.

## Validation Data

---



Western blot analysis of various lysates, using HRP-conjugated Rabbit anti His-Tag mAb (AE104) at 1:10000 dilution.

Lysates/proteins: 25µg per lane.

Blocking buffer: 3% nonfat dry milk in TBST.

Detection: ECL Basic Kit (RM00020).

Exposure time: 0.09s.