

HA-Tag Rabbit mAb

Catalog No.: AE105

Recombinant

7 Publications

Basic Information

Observed MW

65kDa

Calculated MW

Category

Tag antibody

Applications

WB,IF/ICC,IP,ELISA

Cross-Reactivity

Species independent

CloneNo number

ARC59578

Background

Protein tags are peptide sequences genetically grafted onto a recombinant protein. Often these tags are removable by chemical agents or by enzymatic means, such as proteolysis or intein splicing. Tags are attached to proteins for various purposes. Epitope tags are short peptide sequences which are chosen because high-affinity antibodies can be reliably produced in many different species. These are usually derived from viral genes, which explain their high immunoreactivity. Epitope tags include V5-tag, Myc-tag, HA-tag and NE-tag. These tags are particularly useful for western blotting, immunofluorescence and immunoprecipitation experiments, although they also find use in antibody purification.

Recommended Dilutions

WB 1:2000 - 1:6000

IF/ICC 1:50 - 1:200

IP 0.5µg-4µg antibody for
200µg-400µg extracts of
whole cells

ELISA Recommended starting
concentration is 1 µg/mL.
Please optimize the
concentration based on
your specific assay
requirements.

Contact

☎ | 400-999-6126

✉ | cn.market@abclonal.com.cn

🌐 | www.abclonal.com.cn

Immunogen Information

Gene ID

Swiss Prot

Immunogen

A synthetic peptide corresponding to HA tag.

Synonyms

HA; HA tag; HA-tag; HA-Tag

Product Information

Source

Rabbit

Isotype

IgG1,Kappa

Purification

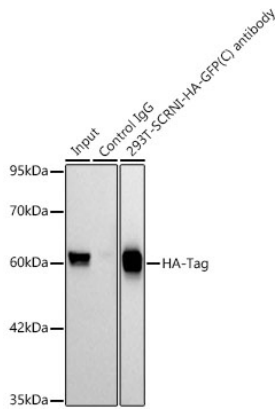
Affinity purification

Storage

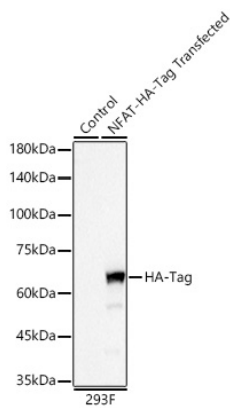
Store at -20°C. Avoid freeze / thaw cycles.

Buffer: PBS with 0.05% proclin300,0.05% BSA,50% glycerol,pH7.3.

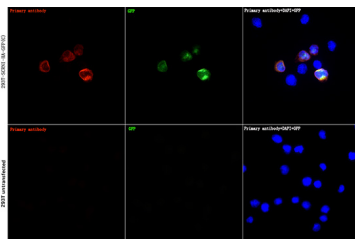
Validation Data



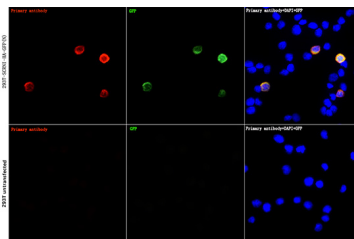
Immunoprecipitation analysis of 300 µg extracts of 293T-SCRNI-HA-GFP-N cells using 3 µg HA-Tag Rabbit mAb (AE105). Western blot was performed from the immunoprecipitate using HA-Tag Rabbit mAb (AE105) at a dilution of 1:6000.



Western blot analysis of lysates from wild type (WT) and 293F cells transfected with NFAT-HA-Tag(C terminal) using HA-Tag Rabbit mAb (AE105) at 1:5000 dilution. Secondary antibody: HRP-conjugated Goat anti-Rabbit IgG (H+L) (AS014) at 1:10000 dilution. Lysates/proteins: 25µg per lane. Blocking buffer: 3% nonfat dry milk in TBST. Detection: ECL Basic Kit (RM00020). Exposure time: 1s.



Immunofluorescence analysis of 293T-SCRNI-HA-GFP(C) and 293T cells using HA-Tag Rabbit mAb (AE105) at dilution of 1:100 (40x lens). Secondary antibody: Cy3-conjugated Goat anti-Rabbit IgG (H+L) (AS007) at 1:500 dilution. Blue: DAPI for nuclear staining.



Immunofluorescence analysis of 293T-SCRNI-HA-GFP(N) and 293T cells using HA-Tag Rabbit mAb (AE105) at dilution of 1:100 (40x lens). Secondary antibody: Cy3-conjugated Goat anti-Rabbit IgG (H+L) (AS007) at 1:500 dilution. Blue: DAPI for nuclear staining.