

Affinity Gel-conjugated Rabbit anti Myc-Tag mAb {Anti-Myc-Tag [] [] [] [] }

Catalog No.: AE120 **2 Publications**

Basic Information

Observed MW

54kDa (Full-length PTEN)

Calculated MW

Category

Tag antibody

Applications

IP

Cross-Reactivity

Species independent

Conjugate

Affinity Gel

Background

Protein tags are peptide sequences genetically grafted onto a recombinant protein. Often these tags are removable by chemical agents or by enzymatic means, such as proteolysis or intein splicing. Tags are attached to proteins for various purposes. Epitope tags are short peptide sequences which are chosen because high-affinity antibodies can be reliably produced in many different species. These are usually derived from viral genes, which explain their high immunoreactivity. Epitope tags include V5-tag, Myc-tag, HA-tag and NE-tag. These tags are particularly useful for western blotting, immunofluorescence and immunoprecipitation experiments, although they also find use in antibody purification.

Recommended Dilutions

IP 20μl-40μl Affinity Gel for
100μg-300μg extracts of
whole cells

Immunogen Information

Gene ID

Swiss Prot

Immunogen

Synthetic peptide. This information is considered to be commercially sensitive.

Synonyms

Myc; Myc tag; Myc-tag; Myc-Tag

Contact

☎ | 400-999-6126

✉ | cn.market@abclonal.com.cn

🌐 | www.abclonal.com.cn

Product Information

Source

Rabbit

Isotype

Purification

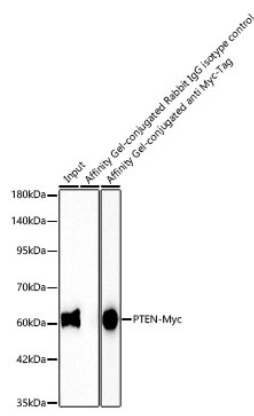
Affinity purification

Storage

Store at -20°C. Avoid freeze / thaw cycles.

Buffer: PBS containing 50% glycerol and 0.05% BSA, preserved with proclin300 or sodium azide (as specified on the Certificate of Analysis), pH 7.3.

Validation Data



Immunoprecipitation of PTEN-Myc from 150 µg extracts of 293T cells transfected with a PTEN expression vector containing a single C-terminal Myc-Tag was performed using 20 µl of Affinity Gel-conjugated Rabbit anti Myc-Tag mAb (AE120). Affinity Gel-conjugated Rabbit IgG isotype control mAb was used to precipitate the Control IgG sample. The IP sample was eluted with 1X Laemmli Buffer. The Input lane represents 10% of the total input. Western blot analysis of immunoprecipitates was conducted using HRP-conjugated Rabbit anti Myc-Tag mAb (AE102) at a dilution of 1:5000.