

# HRP-conjugated Rabbit anti HA-Tag mAb

**Catalog No.: AE123**

## Basic Information

**Observed MW**

53kDa

**Calculated MW****Category**

Tag antibody

**Applications**

WB

**Cross-Reactivity**

Species independent

**CloneNo number**

ARC59578-HRP

**Conjugate**

HRP

## Background

Protein tags are peptide sequences genetically grafted onto a recombinant protein. Often these tags are removable by chemical agents or by enzymatic means, such as proteolysis or intein splicing. Tags are attached to proteins for various purposes. Epitope tags are short peptide sequences which are chosen because high-affinity antibodies can be reliably produced in many different species. These are usually derived from viral genes, which explain their high immunoreactivity. Epitope tags include V5-tag, Myc-tag, HA-tag and NE-tag. These tags are particularly useful for western blotting, immunofluorescence and immunoprecipitation experiments, although they also find use in antibody purification.

## Recommended Dilutions

**WB** 1:10000 - 1:70000

## Immunogen Information

**Gene ID****Swiss Prot****Immunogen**

Synthetic peptide. This information is considered to be commercially sensitive.

**Synonyms**

HA; HA tag; HA-tag; HA-Tag

## Contact

 | 400-999-6126 | [cn.market@abclonal.com.cn](mailto:cn.market@abclonal.com.cn) | [www.abclonal.com.cn](http://www.abclonal.com.cn)

## Product Information

**Source**

Rabbit

**Isotype**

IgG

**Purification**

Affinity purification

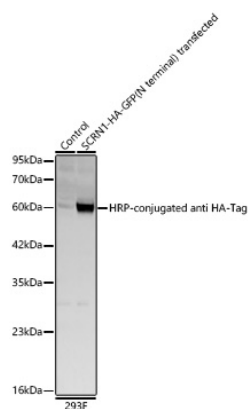
**Storage**

Store at -20°C. Avoid freeze.

Buffer: PBS containing 50% glycerol and 0.2% BSA, preserved with proclin300 or sodium azide (as specified on the Certificate of Analysis), pH 7.3.

## Validation Data

---



Western blot analysis of lysates from wild type (WT) and 293F cells transfected with SCRNI1-HA-GFP(N terminal) using HRP-conjugated Rabbit anti HA-Tag mAb(AE123) at 1:10000 dilution.

Lysates/proteins: 30 µg per lane.

Blocking buffer: 3% nonfat dry milk in TBST.

Detection: ECL Basic Kit (RM00020).

Exposure time: 5s.