

# Rabbit anti mCherry-Tag mAb

Catalog No.: AE127 **1 Publications**

## Basic Information

### Observed MW

33kDa

### Calculated MW

### Category

Tag antibody

### Applications

WB,IP,ELISA

### Cross-Reactivity

Species independent

## Background

Protein tags are peptide sequences genetically grafted onto a recombinant protein. Often these tags are removable by chemical agents or by enzymatic means, such as proteolysis or intein splicing. Tags are attached to proteins for various purposes. Epitope tags are short peptide sequences which are chosen because high-affinity antibodies can be reliably produced in many different species. These are usually derived from viral genes, which explain their high immunoreactivity. Epitope tags include V5-tag, Myc-tag, HA-tag and NE-tag. These tags are particularly useful for western blotting, immunofluorescence and immunoprecipitation experiments, although they also find use in antibody purification.

## Recommended Dilutions

**WB** 1:10000 - 1:40000

**IP** 0.5µg-4µg antibody for  
200µg-600µg extracts of  
whole cells

**ELISA** Recommended starting  
concentration is 1 µg/mL.  
Please optimize the  
concentration based on  
your specific assay  
requirements.

## Contact

☎ | 400-999-6126

✉ | [cn.market@abclonal.com.cn](mailto:cn.market@abclonal.com.cn)

🌐 | [www.abclonal.com.cn](http://www.abclonal.com.cn)

## Immunogen Information

### Gene ID

### Swiss Prot

### Immunogen

Recombinant fusion protein containing a sequence corresponding to amino acids 1-236 of *Discosoma MCherry* fluorescent proteinm.

### Synonyms

mCherry; mCherry tag; mCherry-tag

## Product Information

### Source

Rabbit

### Isotype

IgG

### Purification

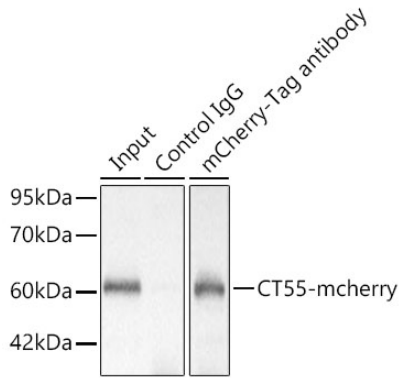
Affinity purification

### Storage

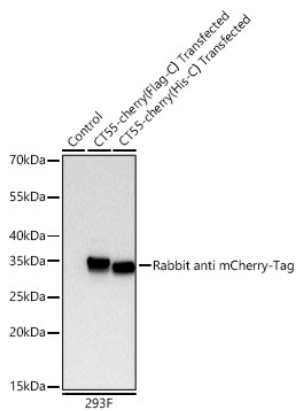
Store at -20°C. Avoid freeze / thaw cycles.

Buffer: PBS with 0.09% Sodium azide,0.05% BSA,50% glycerol,pH7.3.

## Validation Data



Immunoprecipitation of CT55-mCherry from 300 µg extracts of 293F cells transfected with a CT55 expression vector containing a single C-terminal mCherry-Tag was performed using 3 µg of mCherry-Tag Rabbit mAb (AE127). Rabbit IgG isotype control (AC042) was used to precipitate the Control IgG sample. IP samples were eluted with 1X Laemmli Buffer. The Input lane represents 10 % of the total input. Western blot analysis of immunoprecipitates was conducted using mCherry-Tag Rabbit mAb (AE127) at a dilution of 1:6000.



Western blot analysis of lysates from wild type (WT) and 293F cells transfected with mCherry using Rabbit anti mCherry-Tag mAb (AE127) at 1:20000 dilution incubated overnight at 4°C. Secondary antibody: HRP-conjugated Goat anti-Rabbit IgG (H+L) (AS014) at 1:10000 dilution. Lysates/proteins: 20 µg per lane. Blocking buffer: 3% nonfat dry milk in TBST. Detection: ECL Basic Kit (RM00020). Exposure time: 45s.