

S-Tag Rabbit mAb

Catalog No.: AE131 **Recombinant**

Basic Information

Observed MW

30kDa

Calculated MW

Category

Tag antibody

Applications

WB, IF/ICC, ELISA

Cross-Reactivity

Species independent

CloneNo number

ARC65674

Background

S tag is an epitope tag composed of a 15 residue peptide, KETAAKFERQHMS, derived from the pancreatic ribonuclease A.

Recommended Dilutions

WB 1:10000 - 1:20000

IF/ICC 1:200 - 1:2000

IP 0.5µg-4µg antibody for
200µg-400µg extracts of
whole cells

ELISA Recommended starting
concentration is 1 µg/mL.
Please optimize the
concentration based on
your specific assay
requirements.

Immunogen Information

Gene ID

Swiss Prot

Immunogen

Synthetic peptide. This information is considered to be commercially sensitive.

Synonyms

Contact

 | 400-999-6126

 | cn.market@abclonal.com.cn

 | www.abclonal.com.cn

Product Information

Source

Rabbit

Isotype

IgG

Purification

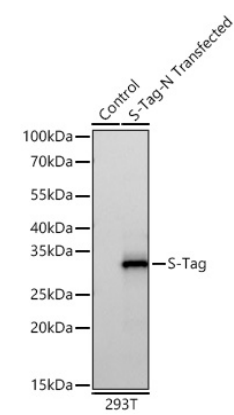
Affinity purification

Storage

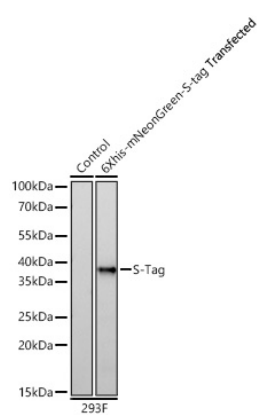
Store at -20°C. Avoid freeze / thaw cycles.

Buffer: PBS containing 50% glycerol and 0.05% BSA, preserved with proclin300 or sodium azide (as specified on the Certificate of Analysis), pH 7.3.

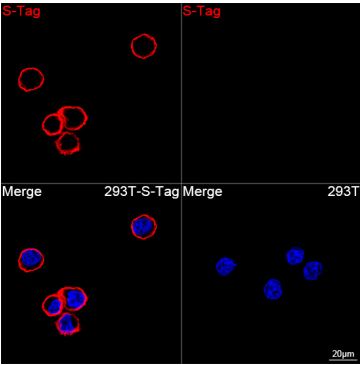
Validation Data



Western blot analysis of lysates from wild type (WT) and 293F cells transfected with S-Tag using S-Tag Rabbit mAb (AE131) at 1:10000 dilution incubated overnight at 4°C.
Secondary antibody: HRP-conjugated Goat anti-Rabbit IgG (H+L) (AS014) at 1:10000 dilution.
Lysates/proteins: 20 µg per lane.
Blocking buffer: 3% nonfat dry milk in TBST.
Detection: ECL Basic Kit (RM00020)
.Exposure time: 60s.



Western blot analysis of lysates from wild type (WT) and 293F cells transfected with S-Tag using S-Tag Rabbit mAb (AE131) at 1:10000 dilution incubated overnight at 4°C.
Secondary antibody: HRP-conjugated Goat anti-Rabbit IgG (H+L) (AS014) at 1:10000 dilution.
Lysates/proteins: 20 µg per lane.
Blocking buffer: 3% nonfat dry milk in TBST.
Detection: ECL Basic Kit (RM00020)
.Exposure time: 60s.



Confocal imaging of 293F cells transfected with S-Tag using S-Tag Rabbit mAb (AE131, dilution 1:200) followed by a further incubation with Cy3 Goat Anti-Rabbit IgG (H+L) (AS007, dilution 1:500) (Red). DAPI was used for nuclear staining (Blue).
Objective: 100x.