

# Phospho-ATM-S1981 Rabbit pAb

Catalog No.: AP0008SP **17 Publications**

## Basic Information

### Observed MW

370 kDa

### Calculated MW

351 kDa

### Category

Primary antibody

### Applications

WB,IF-P,ELISA

### Cross-Reactivity

Human

## Background

The protein encoded by this gene belongs to the PI3/PI4-kinase family. This protein is an important cell cycle checkpoint kinase that phosphorylates; thus, it functions as a regulator of a wide variety of downstream proteins, including tumor suppressor proteins p53 and BRCA1, checkpoint kinase CHK2, checkpoint proteins RAD17 and RAD9, and DNA repair protein NBS1. This protein and the closely related kinase ATR are thought to be master controllers of cell cycle checkpoint signaling pathways that are required for cell response to DNA damage and for genome stability. Mutations in this gene are associated with ataxia telangiectasia, an autosomal recessive disorder.

## Recommended Dilutions

**WB** 1:1000 - 1:5000

**IF-P** 1:200 - 1:1000

**ELISA** Recommended starting concentration is 1 µg/mL. Please optimize the concentration based on your specific assay requirements. For high-ratio antibody dilutions (≥1:10000) a sequential dilution method is strongly recommended to ensure measurement accuracy.

## Immunogen Information

### Gene ID

472

### Swiss Prot

Q13315

### Immunogen

This information is considered to be commercially sensitive.

### Synonyms

AT1; ATA; ATC; ATD; ATE; ATDC; TEL1; TELO1; Phospho-ATM-S1981

## Product Information

### Source

Rabbit

### Isotype

IgG

### Purification

Affinity purification

### Storage

Store at -20°C. Avoid freeze / thaw cycles.

Buffer: PBS, pH 7.3, containing 50% glycerol. Preserved with Proclin300 or sodium azide.

May contain 0.05% BSA as specified on the Certificate of Analysis.

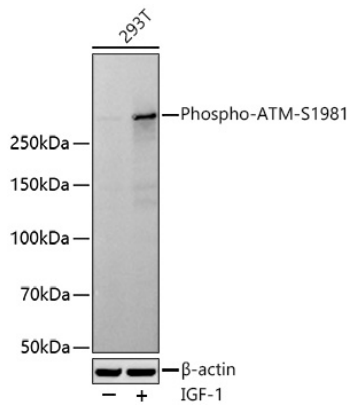
## Contact

☎ | 400-999-6126

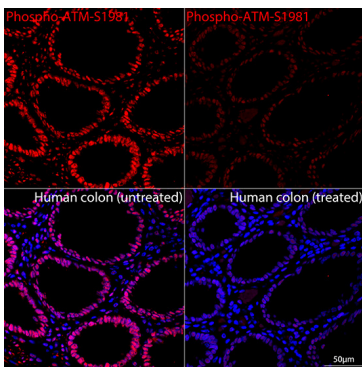
✉ | [cn.market@abclonal.com.cn](mailto:cn.market@abclonal.com.cn)

🌐 | [www.abclonal.com.cn](http://www.abclonal.com.cn)

## Validation Data



Western blot analysis of lysates from 293T cells using Phospho-ATM-S1981 Rabbit pAb (AP0008SP) at 1:2000 dilution incubated at room temperature for 1.5 hours. 293T cells were treated with IGF-1 (20 ng/mL) at 37°C for 2 hours.  
Secondary antibody: HRP-conjugated Goat anti-Rabbit IgG (H+L) (AS014) at 1:10000 dilution.  
Lysates/proteins: 30 µg per lane.  
Blocking buffer: 3% nonfat dry milk in TBST.  
Detection: ECL Basic Kit (RM00020).  
Exposure time: 30 s.



Confocal imaging of paraffin-embedded Human colon tissue (untreated) and Human colon tissue (treated with  $\lambda$ pp) using Phospho-ATM-S1981 Rabbit pAb (AP0008SP, dilution 1:200) followed by a further incubation with Cy3-conjugated Goat anti-Rabbit IgG (H+L) (AS007, dilution 1:500) (Red). DAPI was used for nuclear staining (Blue). High pressure antigen retrieval performed with 0.01M Citrate Buffer (pH 6.0) prior to IF staining. Objective: 40x.