

Phospho-CREB1-S133 Rabbit pAb

Catalog No.: AP0019SP **36 Publications**

Basic Information

Observed MW

43 kDa

Calculated MW

25 kDa/35 kDa/37 kDa

Category

Primary antibody

Applications

WB,IHC-P,ELISA

Cross-Reactivity

Human, Mouse, Rat

Background

This gene encodes a transcription factor that is a member of the leucine zipper family of DNA binding proteins. This protein binds as a homodimer to the cAMP-responsive element, an octameric palindrome. The protein is phosphorylated by several protein kinases, and induces transcription of genes in response to hormonal stimulation of the cAMP pathway. Alternate splicing of this gene results in several transcript variants encoding different isoforms.

Recommended Dilutions

WB 1:2000 - 1:10000

IHC-P 1:1000 - 1:4000

ELISA Recommended starting concentration is 1 µg/mL. Please optimize the concentration based on your specific assay requirements. For high-ratio antibody dilutions (≥1:10000) a sequential dilution method is strongly recommended to ensure measurement accuracy.

Immunogen Information

Gene ID

1385

Swiss Prot

P16220

Immunogen

This information is considered to be commercially sensitive.

Synonyms

CREB; CREB-1; Phospho-CREB1-S133

Product Information

Source

Rabbit

Isotype

IgG

Purification

Affinity purification

Storage

Store at -20°C. Avoid freeze / thaw cycles.

Buffer: PBS, pH 7.3, containing 50% glycerol. Preserved with Proclin300 or sodium azide.

May contain 0.05% BSA as specified on the Certificate of Analysis.

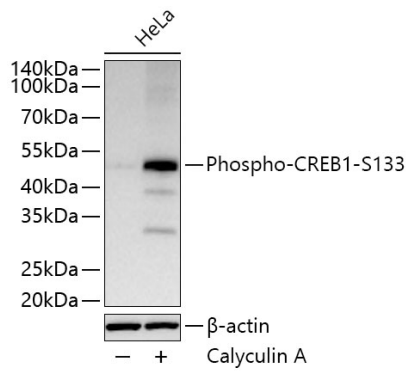
Contact

☎ | 400-999-6126

✉ | cn.market@abclonal.com.cn

🌐 | www.abclonal.com.cn

Validation Data



Western blot analysis of lysates from HeLa cells using Phospho-CREB1-S133 Rabbit pAb (AP0019SP) at 1:10000 dilution incubated overnight at 4°C. HeLa cells were treated with Calyculin A (100 nM) at 37°C for 30 minutes.

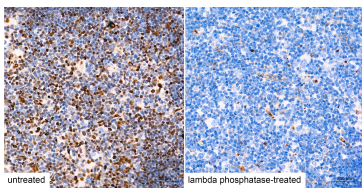
Secondary antibody: HRP-conjugated Goat anti-Rabbit IgG (H+L) (AS014) at 1:10000 dilution.

Lysates/proteins: 30 µg per lane.

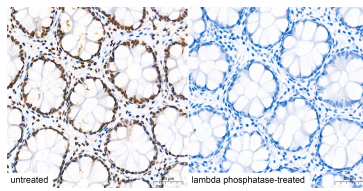
Blocking buffer: 3% nonfat dry milk in TBST.

Detection: ECL Basic Kit (RM00020).

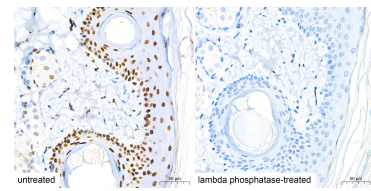
Exposure time: 60 s.



Immunohistochemistry analysis of paraffin-embedded Mouse thymus tissue, untreated (left) and lambda phosphatase-treated (right), using Phospho-CREB1-S133 Rabbit pAb (AP0019SP) at a dilution of 1:2000 (40x lens). High pressure antigen retrieval performed with 0.01M Tris-EDTA Buffer (pH 9.0) prior to IHC staining.



Immunohistochemistry analysis of paraffin-embedded Human colon tissue, untreated (left) and lambda phosphatase-treated (right), using Phospho-CREB1-S133 Rabbit pAb (AP0019SP) at a dilution of 1:2000 (40x lens). High pressure antigen retrieval performed with 0.01M Tris-EDTA Buffer (pH 9.0) prior to IHC staining.



Immunohistochemistry analysis of paraffin-embedded Rat skin tissue, untreated (left) and lambda phosphatase-treated (right), using Phospho-CREB1-S133 Rabbit pAb (AP0019SP) at a dilution of 1:2000 (40x lens). High pressure antigen retrieval performed with 0.01M Tris-EDTA Buffer (pH 9.0) prior to IHC staining.