

# Phospho-eIF4EBP1-T37/46 Rabbit pAb

Catalog No.: AP0030

14 Publications

## Basic Information

**Observed MW**

15kDa-20kDa

**Calculated MW**

13kDa

**Category**

Primary antibody

**Applications**

WB, IHC-P, IF/ICC, (ELISA)

**Cross-Reactivity**

Human, Mouse, Rat

## Background

This gene encodes one member of a family of translation repressor proteins. The protein directly interacts with eukaryotic translation initiation factor 4E (eIF4E), which is a limiting component of the multisubunit complex that recruits 40S ribosomal subunits to the 5' end of mRNAs. Interaction of this protein with eIF4E inhibits complex assembly and represses translation. This protein is phosphorylated in response to various signals including UV irradiation and insulin signaling, resulting in its dissociation from eIF4E and activation of mRNA translation.

## Recommended Dilutions

**WB** 1:500 - 1:1000**IHC-P** 1:50 - 1:200**IF/ICC** 1:50 - 1:200

**ELISA** Recommended starting concentration is 1 µg/mL. Please optimize the concentration based on your specific assay requirements.

## Immunogen Information

**Gene ID**

1978

**Swiss Prot**

Q13541

**Immunogen**

A synthetic phosphorylated peptide around T37 &amp; T46 of human eIF4EBP1 (NP\_004086.1).

**Synonyms**

BP-1; 4EBP1; 4E-BP1; PHAS-I; Phospho-eIF4EBP1-T37/46

## Contact

 | 400-999-6126 | [cn.market@abclonal.com.cn](mailto:cn.market@abclonal.com.cn) | [www.abclonal.com.cn](http://www.abclonal.com.cn)

## Product Information

**Source**

Rabbit

**Isotype**

IgG

**Purification**

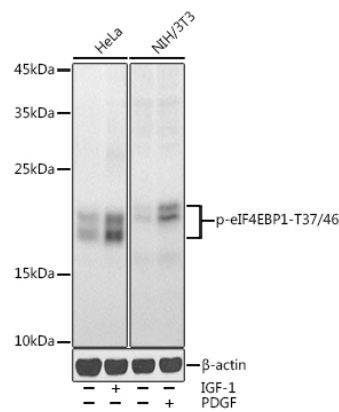
Affinity purification

**Storage**

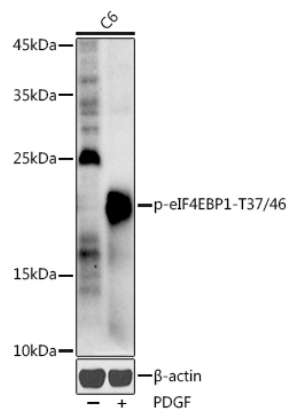
Store at -20°C. Avoid freeze / thaw cycles.

Buffer: PBS with 0.02% sodium azide, 50% glycerol, pH 7.3.

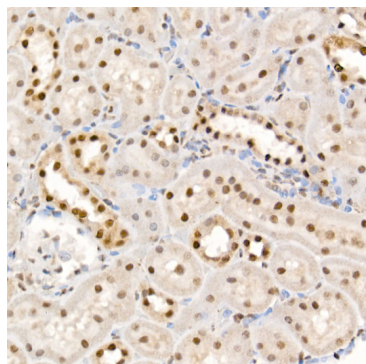
Validation Data



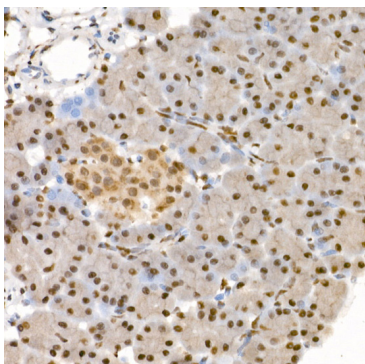
Western blot analysis of various lysates using Phospho-eIF4EBP1-T37/46 Rabbit pAb (AP0030) at 1:1000 dilution. HeLa cells were treated by IGF-1 (50 ng/ml) at 37°C for 30 minutes after serum-starvation overnight. NIH/3T3 cells were treated by PDGF (100 ng/ml) at 37°C for 30 minutes after serum-starvation overnight.  
Secondary antibody: HRP-conjugated Goat anti-Rabbit IgG (H+L) (AS014) at 1:10000 dilution.  
Lysates/proteins: 25µg per lane.  
Blocking buffer: 3% nonfat dry milk in TBST.  
Detection: ECL Enhanced Kit (RM00021).  
Exposure time: 30s.



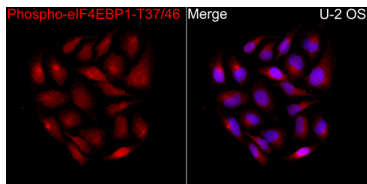
Western blot analysis of lysates from C6 cells, using Phospho-eIF4EBP1-T37/46 Rabbit pAb (AP0030) at 1:1000 dilution. C6 cells were treated by PDGF (100 ng/ml) at 37°C for 30 minutes after serum-starvation overnight.  
Secondary antibody: HRP-conjugated Goat anti-Rabbit IgG (H+L) (AS014) at 1:10000 dilution.  
Lysates/proteins: 25µg per lane.  
Blocking buffer: 3% nonfat dry milk in TBST.  
Detection: ECL Enhanced Kit (RM00021).  
Exposure time: 180s.



Immunohistochemistry analysis of paraffin-embedded Rat kidney using Phospho-eIF4EBP1-T37/46 Rabbit pAb (AP0030) at dilution of 1:100 (40x lens). High pressure antigen retrieval performed with 0.01M Citrate Bufferr (pH 6.0) prior to IHC staining.



Immunohistochemistry analysis of paraffin-embedded Rat pancreas using Phospho-eIF4EBP1-T37/46 Rabbit pAb (AP0030) at dilution of 1:100 (40x lens). High pressure antigen retrieval performed with 0.01M Citrate Bufferr (pH 6.0) prior to IHC staining.



Immunofluorescence analysis of U-2 OS cells using Phospho-eIF4EBP1-T37/46 Rabbit pAb(AP0030) at a dilution of 1:100 (40x lens). Secondary antibody: Cy3 Goat Anti-Rabbit IgG (H+L)(AS007) at 1:500 dilution. Blue: DAPI for nuclear staining.