

# Phospho-eIF4EBP1-T70 Rabbit pAb

Catalog No.: AP0031 **1 Publications**

## Basic Information

### Observed MW

17kDa

### Calculated MW

13kDa

### Category

Primary antibody

### Applications

WB,IHC-P,ELISA

### Cross-Reactivity

Human, Mouse, Rat

## Background

This gene encodes one member of a family of translation repressor proteins. The protein directly interacts with eukaryotic translation initiation factor 4E (eIF4E), which is a limiting component of the multisubunit complex that recruits 40S ribosomal subunits to the 5' end of mRNAs. Interaction of this protein with eIF4E inhibits complex assembly and represses translation. This protein is phosphorylated in response to various signals including UV irradiation and insulin signaling, resulting in its dissociation from eIF4E and activation of mRNA translation.

## Recommended Dilutions

**WB** 1:500 - 1:2000**IHC-P** 1:50 - 1:200**ELISA** Recommended starting concentration is 1 µg/mL. Please optimize the concentration based on your specific assay requirements.

## Immunogen Information

**Gene ID**

1978

**Swiss Prot**

Q13541

**Immunogen**

Synthetic peptide. This information is considered to be commercially sensitive.

**Synonyms**

BP-1; 4EBP1; 4E-BP1; PHAS-I; Phospho-eIF4EBP1-T70

## Contact

 | 400-999-6126 | [cn.market@abclonal.com.cn](mailto:cn.market@abclonal.com.cn) | [www.abclonal.com.cn](http://www.abclonal.com.cn)

## Product Information

**Source**

Rabbit

**Isotype**

IgG

**Purification**

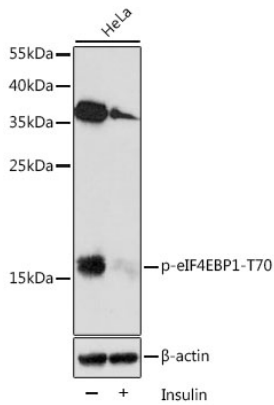
Affinity purification

**Storage**

Store at -20°C. Avoid freeze / thaw cycles.

Buffer: PBS containing 50% glycerol, preserved with proclin300 or sodium azide (as specified on the Certificate of Analysis), pH 7.3.

## Validation Data



Western blot analysis of lysates from HeLa cells, using Phospho-eIF4EBP1-T70 Rabbit pAb (AP0031) at 1:2000 dilution. HeLa cells were treated by Insulin (100 nM) at 37°C for 5 minutes after serum-starvation overnight.

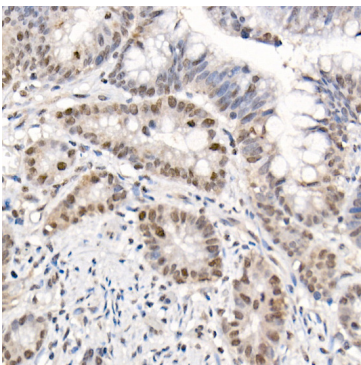
Secondary antibody: HRP-conjugated Goat anti-Rabbit IgG (H+L) (AS014) at 1:10000 dilution.

Lysates/proteins: 25µg per lane.

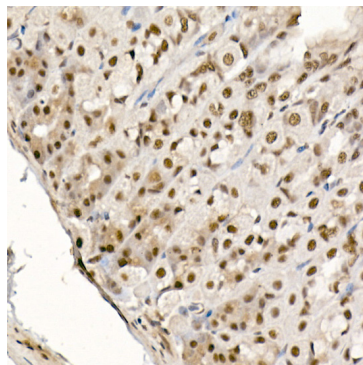
Blocking buffer: 3% BSA.

Detection: ECL Enhanced Kit (RM00021).

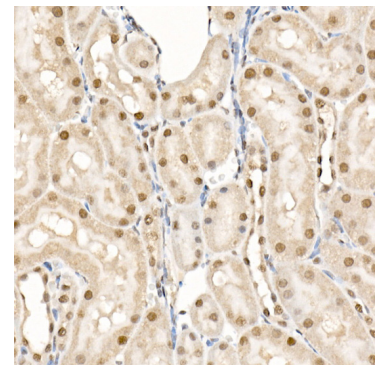
Exposure time: 3min.



Immunohistochemistry analysis of paraffin-embedded Human colon carcinoma using Phospho-eIF4EBP1-T70 Rabbit pAb (AP0031) at dilution of 1:50 (40x lens). High pressure antigen retrieval performed with 0.01M Citrate buffer (pH 6.0) prior to IHC staining.



Immunohistochemistry analysis of paraffin-embedded Mouse stomach using Phospho-eIF4EBP1-T70 Rabbit pAb (AP0031) at dilution of 1:50 (40x lens). High pressure antigen retrieval performed with 0.01M Citrate buffer (pH 6.0) prior to IHC staining.



Immunohistochemistry analysis of paraffin-embedded Rat kidney using Phospho-eIF4EBP1-T70 Rabbit pAb (AP0031) at dilution of 1:50 (40x lens). High pressure antigen retrieval performed with 0.01M Citrate buffer (pH 6.0) prior to IHC staining.