

Phospho-HSP27/HSPB1-S82 Rabbit pAb

Catalog No.: AP0041

4 Publications

Basic Information

Observed MW

28kDa

Calculated MW

23kDa

Category

Primary antibody

Applications

WB, IHC-P, IP, ELISA

Cross-Reactivity

Human

Background

This gene encodes a member of the small heat shock protein (HSP20) family of proteins. In response to environmental stress, the encoded protein translocates from the cytoplasm to the nucleus and functions as a molecular chaperone that promotes the correct folding of other proteins. This protein plays an important role in the differentiation of a wide variety of cell types. Expression of this gene is correlated with poor clinical outcome in multiple human cancers, and the encoded protein may promote cancer cell proliferation and metastasis, while protecting cancer cells from apoptosis. Mutations in this gene have been identified in human patients with Charcot-Marie-Tooth disease and distal hereditary motor neuropathy.

Recommended Dilutions

WB 1:500 - 1:2000**IHC-P** 1:50 - 1:200**IP** 0.5µg-4µg antibody for
200µg-400µg extracts of
whole cells**ELISA** Recommended starting
concentration is 1 µg/mL.
Please optimize the
concentration based on
your specific assay
requirements.

Immunogen Information

Gene ID

3315

Swiss Prot

P04792

Immunogen

Synthetic peptide. This information is considered to be commercially sensitive.

Synonyms

CMT2F; HMN2B; HSP27; HSP28; Hsp25; SRP27; HS.76067; HEL-S-102; Phospho-HSP27/HSPB1-S82

Contact

 | 400-999-6126 | cn.market@abclonal.com.cn | www.abclonal.com.cn

Product Information

Source

Rabbit

Isotype

IgG

Purification

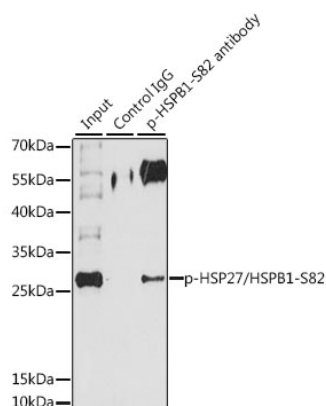
Affinity purification

Storage

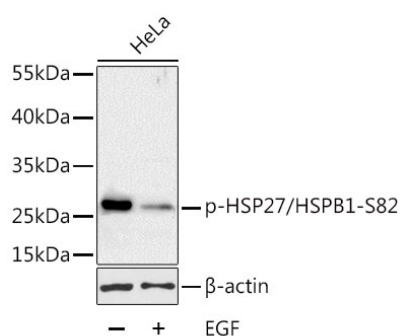
Store at -20°C. Avoid freeze / thaw cycles.

Buffer: PBS with 0.09% Sodium azide, 50% glycerol, pH7.3.

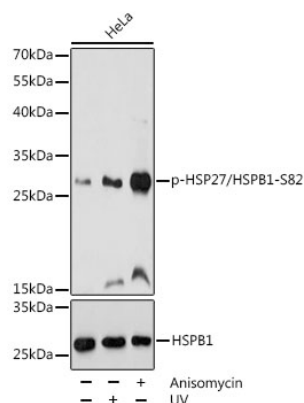
Validation Data



Immunoprecipitation analysis of 200 µg extracts of HeLa cells, using 3 µg Phospho-HSP27/HSPB1-S82 pAb (AP0041). Western blot was performed from the immunoprecipitate using Phospho-HSP27/HSPB1-S82 pAb (AP0041) at a dilution of 1:1000. HeLa cells were treated with EGF (100 ng/mL) at 37°C for 30 minutes after serum-starvation overnight.



Western blot analysis of lysates from HeLa cells, using Phospho-HSP27/HSPB1-S82 Rabbit pAb (AP0041) at 1:1000 dilution. HeLa cells were treated with EGF (100ng/mL) for 30 minutes after serum-starvation overnight.
Secondary antibody: HRP-conjugated Goat anti-Rabbit IgG (H+L) (AS014) at 1:10000 dilution.
Lysates/proteins: 25µg per lane.
Blocking buffer: 3% BSA.
Detection: ECL Basic Kit (RM00020).
Exposure time: 1min.



Western blot analysis of lysates from HeLa cells, using Phospho-HSP27/HSPB1-S82 pAb (AP0041) at 1:1000 dilution or HSP27/HSPB1 antibody (A16332). HeLa cells were treated with UV at room temperature for 15-30 minutes. HeLa cells were treated with Anisomycin (25 µg/mL) at 37°C for 30 minutes after serum-starvation overnight.
Secondary antibody: HRP-conjugated Goat anti-Rabbit IgG (H+L) (AS014) at 1:10000 dilution.
Lysates/proteins: 25µg per lane.
Blocking buffer: 3% BSA.
Detection: ECL Basic Kit (RM00020).
Exposure time: 10s.