

Phospho-INSR-Y1150/IGF1R-Y1135 Rabbit pAb

Catalog No.: AP0044 **2 Publications**

Basic Information

Observed MW

80kDa

Calculated MW

154kDa/155kDa/156kDa

Category

Primary antibody

Applications

WB,ELISA

Cross-Reactivity

Human, Mouse, Rat

Background

This receptor binds insulin-like growth factor with a high affinity. It has tyrosine kinase activity. The insulin-like growth factor I receptor plays a critical role in transformation events. Cleavage of the precursor generates alpha and beta subunits. It is highly overexpressed in most malignant tissues where it functions as an anti-apoptotic agent by enhancing cell survival. Alternatively spliced transcript variants encoding distinct isoforms have been found for this gene. [provided by RefSeq, May 2014]

Recommended Dilutions

WB 1:500 - 1:2000

ELISA Recommended starting concentration is 1 µg/mL. Please optimize the concentration based on your specific assay requirements.

Immunogen Information

Gene ID

3480/3643

Swiss Prot

P08069/P06213

Immunogen

A synthetic phosphorylated peptide around Y1150 of human IGF1RINSR (NP_001073285.1).

Synonyms

IGF1R/INSR; Phospho-INSR-Y1150/IGF1R-Y1135

Contact

 | 400-999-6126

 | cn.market@abclonal.com.cn

 | www.abclonal.com.cn

Product Information

Source

Rabbit

Isotype

IgG

Purification

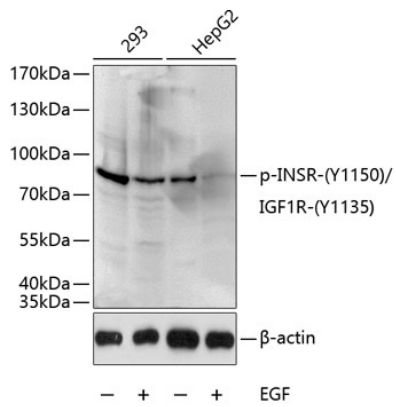
Affinity purification

Storage

Store at -20°C. Avoid freeze / thaw cycles.

Buffer: PBS with 0.02% sodium azide,50% glycerol,pH7.3.

Validation Data



Western blot analysis of lysates from 293 and HepG2 cells, using Phospho-INSR-Y1150/IGF1R-Y1135 Rabbit pAb (AP0044) at 1:1000 dilution. 293 cells were treated by EGF (25 μ g/mL) for 30 minutes after serum-starvation overnight. HepG2 cells were treated by EGF (100ng/mL) for 30 minutes after serum-starvation overnight.
Secondary antibody: HRP-conjugated Goat anti-Rabbit IgG (H+L) (AS014) at 1:10000 dilution.
Lysates/proteins: 25 μ g per lane.
Blocking buffer: 3% BSA.