

# Phospho-p38 MAPK-Y182 Rabbit pAb

Catalog No.: AP0057 **14 Publications**

## Basic Information

**Observed MW**

42kDa

**Calculated MW**

41kDa

**Category**

Primary antibody

**Applications**

ELISA,WB,IHC-P

**Cross-Reactivity**

Human, Mouse, Rat

## Background

The protein encoded by this gene is a member of the MAP kinase family. MAP kinases act as an integration point for multiple biochemical signals, and are involved in a wide variety of cellular processes such as proliferation, differentiation, transcription regulation and development. This kinase is activated by various environmental stresses and proinflammatory cytokines. The activation requires its phosphorylation by MAP kinase kinases (MKKs), or its autophosphorylation triggered by the interaction of MAP3K7IP1/TAB1 protein with this kinase. The substrates of this kinase include transcription regulator ATF2, MEF2C, and MAX, cell cycle regulator CDC25B, and tumor suppressor p53, which suggest the roles of this kinase in stress related transcription and cell cycle regulation, as well as in genotoxic stress response. Four alternatively spliced transcript variants of this gene encoding distinct isoforms have been reported.

## Recommended Dilutions

<b>WB</b>	1:500 - 1:1000
<b>IHC-P</b>	1:50 - 1:200

## Immunogen Information

**Gene ID**

1432

**Swiss Prot**

Q16539

**Immunogen**

A synthetic phosphorylated peptide around Y182 of human MAPK (NP\_620581.1).

**Synonyms**

RK; p38; CSBP; EXIP; Mxi2; CSBP1; CSBP2; CSPB1; PRKM14; PRKM15; SAPK2A; p38ALPHA; Phospho-p38 MAPK-Y182

## Contact

 | 400-999-6126 | [cn.market@abclonal.com.cn](mailto:cn.market@abclonal.com.cn) | [www.abclonal.com.cn](http://www.abclonal.com.cn)

## Product Information

**Source**

Rabbit

**Isotype**

IgG

**Purification**

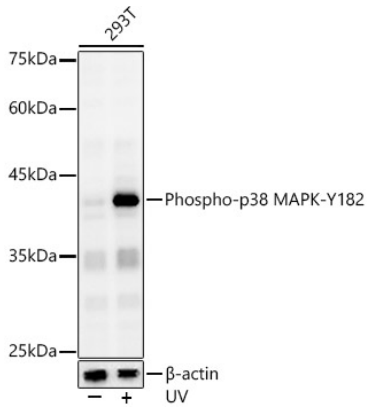
Affinity purification

**Storage**

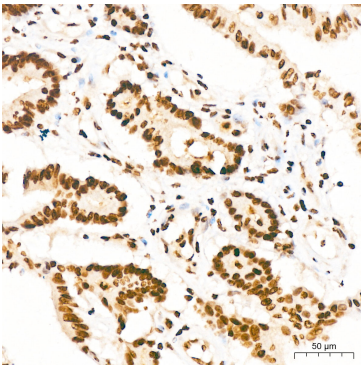
Store at -20°C. Avoid freeze / thaw cycles.

Buffer: PBS with 0.05% proclin300,50% glycerol,pH7.3.

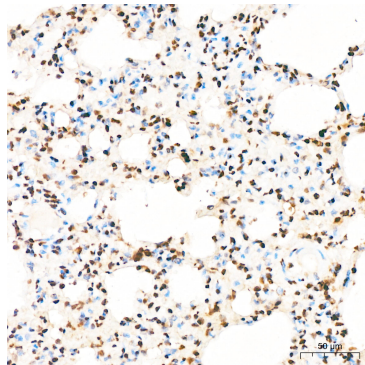
## Validation Data



Western blot analysis of lysates from 293T cells, using Phospho-p38 MAPK-Y182 Rabbit pAb (AP0057) at 1:1000 dilution.  
Secondary antibody: HRP Goat Anti-Rabbit IgG (H+L) (AS014) at 1:10000 dilution.  
Lysates/proteins: 25µg per lane.  
Blocking buffer: 3% nonfat dry milk in TBST.  
Detection: ECL Enhanced Kit (RM00021).  
Exposure time: 30s.



Immunohistochemistry analysis of Phospho-p38 MAPK-Y182 in paraffin-embedded human colon carcinoma tissue using Phospho-p38 MAPK-Y182 Rabbit pAb (AP0057) at a dilution of 1:100 (40x lens). High pressure antigen retrieval was performed with 0.01 M citrate buffer (pH 6.0) prior to IHC staining.



Immunohistochemistry analysis of Phospho-p38 MAPK-Y182 in paraffin-embedded rat lung tissue using Phospho-p38 MAPK-Y182 Rabbit pAb (AP0057) at a dilution of 1:100 (40x lens). High pressure antigen retrieval was performed with 0.01 M citrate buffer (pH 6.0) prior to IHC staining.