

Phospho-MEK1-S298 Rabbit pAb

Catalog No.: AP0063

3 Publications

Basic Information

Observed MW

43kDa

Calculated MW

43kDa

Category

Primary antibody

Applications

WB,IP,ELISA

Cross-Reactivity

Human, Mouse, Rat

Background

The protein encoded by this gene is a member of the dual specificity protein kinase family, which acts as a mitogen-activated protein (MAP) kinase kinase. MAP kinases, also known as extracellular signal-regulated kinases (ERKs), act as an integration point for multiple biochemical signals. This protein kinase lies upstream of MAP kinases and stimulates the enzymatic activity of MAP kinases upon wide variety of extra- and intracellular signals. As an essential component of MAP kinase signal transduction pathway, this kinase is involved in many cellular processes such as proliferation, differentiation, transcription regulation and development.

Recommended Dilutions

WB 1:500 - 1:2000

IP 0.5µg-4µg antibody for
200µg-400µg extracts of
whole cells

ELISA Recommended starting
concentration is 1 µg/mL.
Please optimize the
concentration based on
your specific assay
requirements.

Immunogen Information

Gene ID

5604

Swiss Prot

Q02750

Immunogen

Synthetic peptide. This information is considered to be commercially sensitive.

Synonyms

MEL; CFC3; MEK1; MKK1; MAPKK1; PRKMK1; Phospho-MEK1-S298

Contact

☎ | 400-999-6126

✉ | cn.market@abclonal.com.cn

🌐 | www.abclonal.com.cn

Product Information

Source

Rabbit

Isotype

IgG

Purification

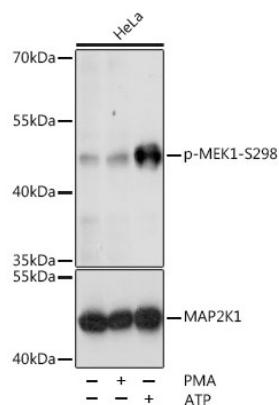
Affinity purification

Storage

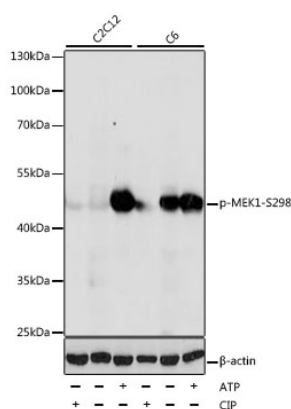
Store at -20°C. Avoid freeze / thaw cycles.

Buffer: PBS with 0.02% sodium azide, 50% glycerol, pH7.3.

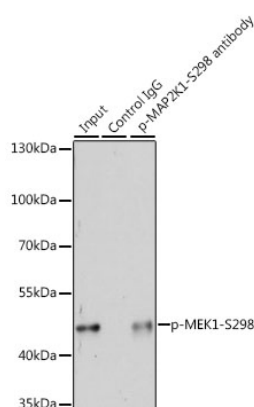
Validation Data



Western blot analysis of various lysates using Phospho-MEK1-S298 Rabbit pAb (AP0063) at 1:1000 dilution or MEK1 antibody (A12687). HeLa cells were treated with PMA/TPA (200 nM) at 37°C for 15 minutes after serum-starvation overnight or treated with ATP(5 mM) at 30°C for 1 hour.
Secondary antibody: HRP-conjugated Goat anti-Rabbit IgG (H+L) (AS014) at 1:10000 dilution.
Lysates/proteins: 25µg per lane.
Blocking buffer: 3% BSA.
Detection: ECL Basic Kit (RM00020).
Exposure time: 1s.



Western blot analysis of various lysates using Phospho-MEK1-S298 Rabbit pAb (AP0063) at 1:1000 dilution. C2C12 cells were treated with CIP(20uL/400ul) at 37°C for 1 hour or treated with ATP(5 mM) at 30°C for 1 hour. C6 cells were treated with CIP(20uL/400ul) at 37°C for 1 hour or treated with ATP(5 mM) at 30°C for 1 hour.
Secondary antibody: HRP-conjugated Goat anti-Rabbit IgG (H+L) (AS014) at 1:10000 dilution.
Lysates/proteins: 25µg per lane.
Blocking buffer: 3% BSA.
Detection: ECL Basic Kit (RM00020).
Exposure time: 1s.



Immunoprecipitation analysis of 200 µg extracts of 293T cells, using 3 µg Phospho-MEK1-S298 pAb (AP0063). Western blot was performed from the immunoprecipitate using Phospho-MEK1-S298 pAb (AP0063) at a dilution of 1:1000. 293T cells were treated with PMA/TPA (200 nM) at 37°C for 30 minutes after serum-starvation overnight.