

Phospho-MEK1-T286 Rabbit pAb

Catalog No.: AP0065

Basic Information

Observed MW

43kDa

Calculated MW

43kDa

Category

Primary antibody

Applications

WB, ELISA

Cross-Reactivity

Human, Mouse, Rat

Background

The protein encoded by this gene is a member of the dual specificity protein kinase family, which acts as a mitogen-activated protein (MAP) kinase kinase. MAP kinases, also known as extracellular signal-regulated kinases (ERKs), act as an integration point for multiple biochemical signals. This protein kinase lies upstream of MAP kinases and stimulates the enzymatic activity of MAP kinases upon wide variety of extra- and intracellular signals. As an essential component of MAP kinase signal transduction pathway, this kinase is involved in many cellular processes such as proliferation, differentiation, transcription regulation and development.

Recommended Dilutions

WB 1:500 - 1:2000**ELISA** Recommended starting concentration is 1 µg/mL. Please optimize the concentration based on your specific assay requirements.

Immunogen Information

Gene ID

5604

Swiss Prot

Q02750

Immunogen

Synthetic peptide. This information is considered to be commercially sensitive.

Synonyms

MEL; CFC3; MEK1; MKK1; MAPKK1; PRKMK1; Phospho-MEK1-T286

Contact

 | 400-999-6126 | cn.market@abclonal.com.cn | www.abclonal.com.cn

Product Information

Source

Rabbit

Isotype

IgG

Purification

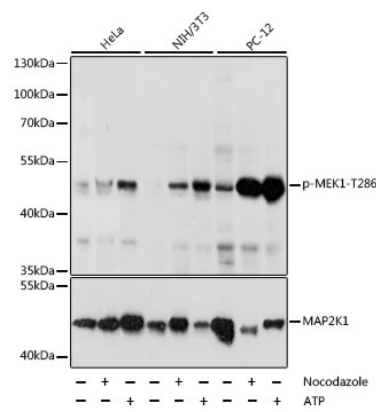
Affinity purification

Storage

Store at -20°C. Avoid freeze / thaw cycles.

Buffer: PBS with 0.02% sodium azide, 50% glycerol, pH 7.3.

Validation Data



Western blot analysis of various lysates using Phospho-MEK1-T286 Rabbit pAb (AP0065) at 1:2000 dilution or MEK1 antibody (A12687). HeLa cells were treated with nocodazole (50 ng/mL) at 37°C for 20 hours or treated with ATP(5 mM) at 30°C for 1 hour. NIH/3T3 cells were treated with Nocodazole (50 ng/mL) at 37°C for 20 hours or treated with ATP(5 mM) at 30°C for 1 hour. PC-12 cells were treated with Nocodazole (1 µg/mL) at 37°C for 16 hours or treated with ATP(5 mM) at 30°C for 1 hour. Secondary antibody: HRP-conjugated Goat anti-Rabbit IgG (H+L) (AS014) at 1:10000 dilution. Lysates/proteins: 25µg per lane. Blocking buffer: 3% BSA. Detection: ECL Basic Kit (RM00020). Exposure time: 30s.