

Phospho-TAK1-S412 Rabbit pAb

Catalog No.: AP0071 **2 Publications**

Basic Information

Observed MW

75kDa

Calculated MW

67kDa

Category

Primary antibody

Applications

ELISA, WB

Cross-Reactivity

Human, Mouse, Rat

Background

The protein encoded by this gene is a member of the serine/threonine protein kinase family. This kinase mediates the signaling transduction induced by TGF beta and morphogenetic protein (BMP), and controls a variety of cell functions including transcription regulation and apoptosis. In response to IL-1, this protein forms a kinase complex including TRAF6, MAP3K7P1/TAB1 and MAP3K7P2/TAB2; this complex is required for the activation of nuclear factor kappa B. This kinase can also activate MAPK8/JNK, MAP2K4/MKK4, and thus plays a role in the cell response to environmental stresses. Four alternatively spliced transcript variants encoding distinct isoforms have been reported.

Recommended Dilutions

WB 1:500 - 1:1000

Immunogen Information

Gene ID

6885

Swiss Prot

O43318

Immunogen

A synthetic phosphorylated peptide around S412 of human TAK1 (NP_003179.1).

Synonyms

CSCF; FMD2; TAK1; MEKK7; TGF1a; Phospho-TAK1-S412

Contact

☎ | 400-999-6126

✉ | cn.market@abclonal.com.cn

🌐 | www.abclonal.com.cn

Product Information

Source

Rabbit

Isotype

IgG

Purification

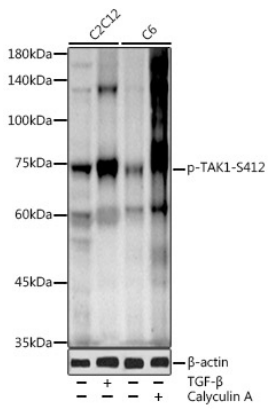
Affinity purification

Storage

Store at -20°C. Avoid freeze / thaw cycles.

Buffer: PBS with 0.02% sodium azide, 50% glycerol, pH 7.3.

Validation Data



Western blot analysis of various lysates using Phospho-TAK1-S412 Rabbit pAb (AP0071) at 1:1000 dilution. C2C12 cells were treated by TGF- β (10 ng/ml) at 37°C for 30 minutes. C6 cells were treated by Calyculin A (100 nM) at 37°C for 30 minutes after serum-starvation overnight. Secondary antibody: HRP Goat Anti-Rabbit IgG (H+L) (AS014) at 1:10000 dilution. Lysates/proteins: 25 μ g per lane. Blocking buffer: 3% nonfat dry milk in TBST. Detection: ECL Enhanced Kit (RM00021). Exposure time: 120s.