

# Phospho-NF-kB p65/RelA-S276 Rabbit pAb

Catalog No.: AP0123 **102 Publications**

## Basic Information

### Observed MW

65kDa

### Calculated MW

60kDa

### Category

Primary antibody

### Applications

WB,IHC-P,IF/ICC,ELISA

### Cross-Reactivity

Human, Mouse, Rat

## Background

NF-kappa-B is a ubiquitous transcription factor involved in several biological processes. It is held in the cytoplasm in an inactive state by specific inhibitors. Upon degradation of the inhibitor, NF-kappa-B moves to the nucleus and activates transcription of specific genes. NF-kappa-B is composed of NFKB1 or NFKB2 bound to either REL, RELA, or RELB. The most abundant form of NF-kappa-B is NFKB1 complexed with the product of this gene, RELA. Four transcript variants encoding different isoforms have been found for this gene.

## Recommended Dilutions

**WB** 1:100 - 1:500

**IHC-P** 1:100 - 1:500

**IF/ICC** 1:50 - 1:200

**ELISA** Recommended starting concentration is 1 µg/mL. Please optimize the concentration based on your specific assay requirements.

## Immunogen Information

### Gene ID

5970

### Swiss Prot

Q04206

### Immunogen

A synthetic phosphorylated peptide around S276 of human RelA (NP\_068810.3).

### Synonyms

p65; CMCU; NFKB3; AIF3BL3; Phospho-NF-kB p65/RelA-S276

## Contact

☎ | 400-999-6126

✉ | [cn.market@abclonal.com.cn](mailto:cn.market@abclonal.com.cn)

🌐 | [www.abclonal.com.cn](http://www.abclonal.com.cn)

## Product Information

### Source

Rabbit

### Isotype

IgG

### Purification

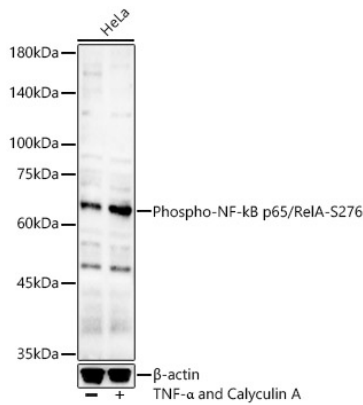
Affinity purification

### Storage

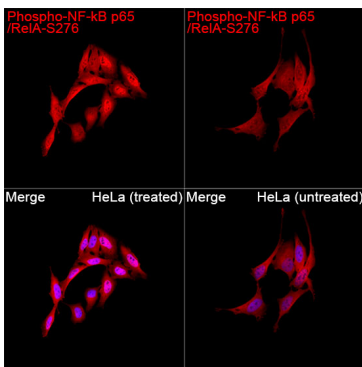
Store at -20°C. Avoid freeze / thaw cycles.

Buffer: PBS with 0.05% proclin300,50% glycerol,pH7.3.

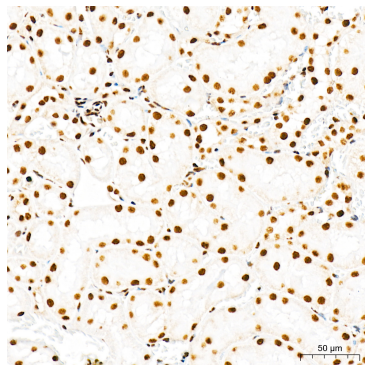
## Validation Data



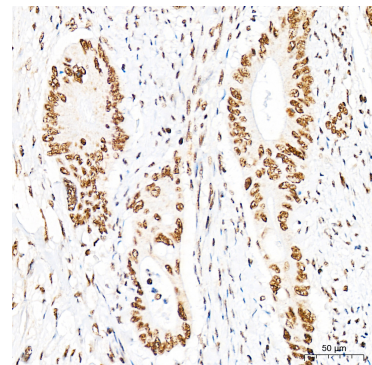
Western blot analysis of lysates from HeLa cells, using Phospho-NF-kB p65/RelA-S276 Rabbit pAb (AP0123) at 1:400 dilution. HeLa cells were treated by TNF- $\alpha$  (20 ng/ml) and Calyculin A (100 nM) at 37°C for 30 minutes after serum-starvation overnight.  
 Secondary antibody: HRP-conjugated Goat anti-Rabbit IgG (H+L) (AS014) at 1:10000 dilution.  
 Lysates/proteins: 25 $\mu$ g per lane.  
 Blocking buffer: 3% nonfat dry milk in TBST.  
 Detection: ECL Basic Kit (RM00020).  
 Exposure time: 180s.



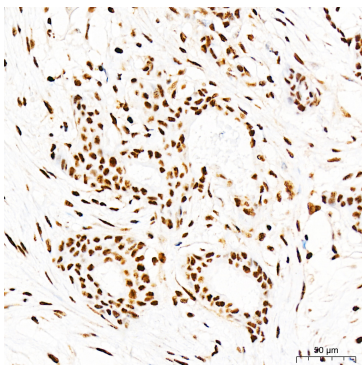
Immunofluorescence analysis of HeLa cells (treated with CA) and HeLa cells (untreated) using Phospho-NF-kB p65/RelA-S276 Rabbit pAb (AP0123) at a dilution of 1:100 (40x lens). Secondary antibody: Cy3-conjugated Goat anti-Rabbit IgG (H+L)(AS007) at 1:500 dilution. Blue: DAPI for nuclear staining.



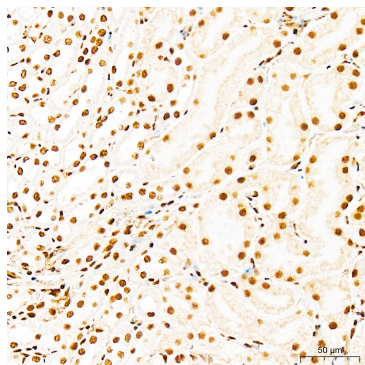
Immunohistochemistry analysis of paraffin-embedded Rat kidney tissue using Phospho-NF-kB p65/RelA-S276 Rabbit pAb (AP0123) at a dilution of 1:1600 (40x lens). High pressure antigen retrieval performed with 0.01M Citrate Bufferr (pH 6.0) prior to IHC staining.



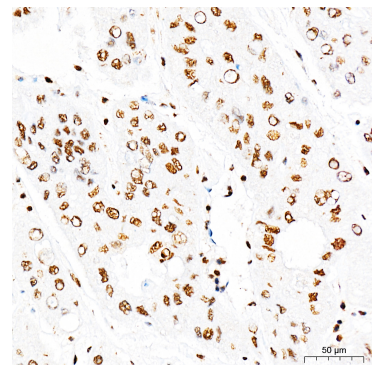
Immunohistochemistry analysis of paraffin-embedded Human colon carcinoma tissue using Phospho-NF-kB p65/RelA-S276 Rabbit pAb (AP0123) at a dilution of 1:1600 (40x lens). High pressure antigen retrieval performed with 0.01M Citrate Bufferr (pH 6.0) prior to IHC staining.



Immunohistochemistry analysis of paraffin-embedded Human breast cancer tissue using Phospho-NF-kB p65/RelA-S276 Rabbit pAb (AP0123) at a dilution of 1:1600 (40x lens). High pressure antigen retrieval performed with 0.01M Citrate Bufferr (pH 6.0) prior to IHC staining.



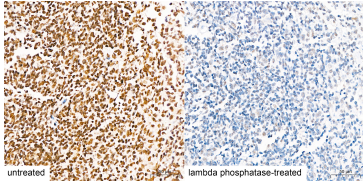
Immunohistochemistry analysis of paraffin-embedded Mouse kidney tissue using Phospho-NF-kB p65/RelA-S276 Rabbit pAb (AP0123) at a dilution of 1:1600 (40x lens). High pressure antigen retrieval performed with 0.01M Citrate Bufferr (pH 6.0) prior to IHC staining.



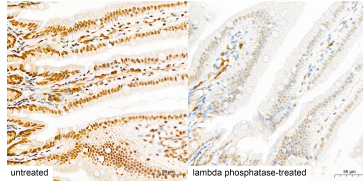
Immunohistochemistry analysis of paraffin-embedded Human liver cancer tissue using Phospho-NF-kB p65/RelA-S276 Rabbit pAb (AP0123) at a dilution of 1:1600 (40x lens). High pressure antigen retrieval performed with 0.01M Citrate Bufferr (pH 6.0) prior to IHC staining.

## Validation Data

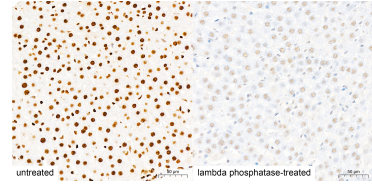
---



Immunohistochemistry analysis of paraffin-embedded Human tonsil tissue, Untreated (left) and lambda phosphatase-treated (right), using Phospho-NF-kB p65/RelA-S276 Rabbit pAb (AP0123) at a dilution of 1:1600 (40x lens). High pressure antigen retrieval performed with 0.01M Citrate Bufferr (pH 6.0) prior to IHC staining.



Immunohistochemistry analysis of paraffin-embedded Mouse intestin tissue, Untreated (left) and lambda phosphatase-treated (right), using Phospho-NF-kB p65/RelA-S276 Rabbit pAb (AP0123) at a dilution of 1:1600 (40x lens). High pressure antigen retrieval performed with 0.01M Citrate Bufferr (pH 6.0) prior to IHC staining.



Immunohistochemistry analysis of paraffin-embedded Rat liver tissue, Untreated (left) and lambda phosphatase-treated (right), using Phospho-NF-kB p65/RelA-S276 Rabbit pAb (AP0123) at a dilution of 1:1600 (40x lens). High pressure antigen retrieval performed with 0.01M Citrate Bufferr (pH 6.0) prior to IHC staining.