

Phospho-EGFR-S1070 Rabbit pAb

Catalog No.: AP0153

Basic Information

Observed MW

175kDa

Calculated MW

134kDa

Category

Primary antibody

Applications

ELISA, WB

Cross-Reactivity

Human

Background

The protein encoded by this gene is a transmembrane glycoprotein that is a member of the protein kinase superfamily. This protein is a receptor for members of the epidermal growth factor family. EGFR is a cell surface protein that binds to epidermal growth factor, thus inducing receptor dimerization and tyrosine autophosphorylation leading to cell proliferation. Mutations in this gene are associated with lung cancer. EGFR is a component of the cytokine storm which contributes to a severe form of Coronavirus Disease 2019 (COVID-19) resulting from infection with severe acute respiratory syndrome coronavirus-2 (SARS-CoV-2).

Recommended Dilutions

WB 1:100 - 1:500

Immunogen Information

Gene ID

1956

Swiss Prot

P00533

Immunogen

A phospho specific peptide corresponding to residues surrounding S1070 of human EGFR

Synonyms

ERBB; ERRP; HER1; mENA; ERBB1; PIG61; NISBD2; Phospho-EGFR-S1070

Contact

☎ | 400-999-6126

✉ | cn.market@abclonal.com.cn

🌐 | www.abclonal.com.cn

Product Information

Source

Rabbit

Isotype

IgG

Purification

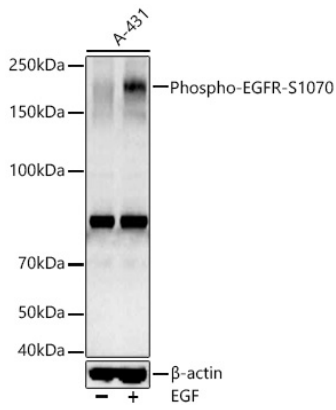
Affinity purification

Storage

Store at -20°C. Avoid freeze / thaw cycles.

Buffer: PBS with 0.02% sodium azide, 50% glycerol, pH 7.3.

Validation Data



Western blot analysis of lysates from A-431 cells, using Phospho-EGFR-S1070 Rabbit pAb (AP0153) at 1:500 dilution. A-431 cells were treated by EGF (100 ng/ml) at 37°C for 30 minutes after serum-starvation overnight.

Secondary antibody: HRP-conjugated Goat anti-Rabbit IgG (H+L) (AS014) at 1:10000 dilution.

Lysates/proteins: 25 μ g per lane.

Blocking buffer: 3% nonfat dry milk in TBST.

Detection: ECL Basic Kit (RM00020).

Exposure time: 60s.