

# Phospho-Paxillin-Y118 Rabbit pAb

Catalog No.: AP0156

## Basic Information

### Observed MW

70kDa

### Calculated MW

65kDa

### Category

Primary antibody

### Applications

ELISA, WB

### Cross-Reactivity

Human

## Background

This gene encodes a cytoskeletal protein involved in actin-membrane attachment at sites of cell adhesion to the extracellular matrix (focal adhesion). Alternatively spliced transcript variants encoding different isoforms have been described for this gene. These isoforms exhibit different expression pattern, and have different biochemical, as well as physiological properties (PMID:9054445).

## Recommended Dilutions

WB 1:500 - 1:2000

## Immunogen Information

### Gene ID

5829

### Swiss Prot

P49023

### Immunogen

A synthetic phosphorylated peptide around Y118 of human Paxillin (NP\_001074324.1).

### Synonyms

Paxillin; PXN; paxillin; Phospho-Paxillin-Y118

## Contact

 | 400-999-6126

 | [cn.market@abclonal.com.cn](mailto:cn.market@abclonal.com.cn)

 | [www.abclonal.com.cn](http://www.abclonal.com.cn)

## Product Information

### Source

Rabbit

### Isotype

IgG

### Purification

Affinity purification

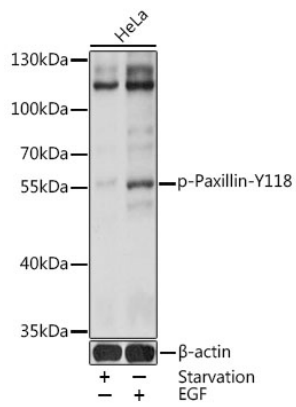
### Storage

Store at -20°C. Avoid freeze / thaw cycles.

Buffer: PBS with 0.01% thimerosal, 50% glycerol, pH7.3.

## Validation Data

---



Western blot analysis of lysates from HeLa cells, using Phospho-Paxillin-Y118 Rabbit pAb (AP0156) at 1:2000 dilution. HeLa cells were treated by EGF (100ng/mL) for 30 minutes after serum-starvation overnight.

Secondary antibody: HRP-conjugated Goat anti-Rabbit IgG (H+L) (AS014) at 1:10000 dilution.

Lysates/proteins: 25µg per lane.

Blocking buffer: 3% BSA.

Detection: ECL Basic Kit (RM00020).

Exposure time: 30s.