

# Phospho-FoxO1-S256 Rabbit pAb

Catalog No.: AP0172 **10 Publications**

## Basic Information

### Observed MW

82kDa/

### Calculated MW

70kDa

### Category

Primary antibody

### Applications

WB,IF/ICC,ELISA

### Cross-Reactivity

Human, Mouse, Rat

## Background

This gene belongs to the forkhead family of transcription factors which are characterized by a distinct forkhead domain. The specific function of this gene has not yet been determined; however, it may play a role in myogenic growth and differentiation. Translocation of this gene with PAX3 has been associated with alveolar rhabdomyosarcoma.

## Recommended Dilutions

**WB** 1:500 - 1:1000

**IF/ICC** 1:50 - 1:200

**ELISA** Recommended starting concentration is 1 µg/mL. Please optimize the concentration based on your specific assay requirements.

## Immunogen Information

### Gene ID

2308

### Swiss Prot

Q12778

### Immunogen

A synthetic phosphorylated peptide around S256 of human FoxO1 (NP\_002006.2).

### Synonyms

FKH1; FKHR; FOXO1A; Phospho-FoxO1-S256

## Contact

☎ | 400-999-6126

✉ | [cn.market@abclonal.com.cn](mailto:cn.market@abclonal.com.cn)

🌐 | [www.abclonal.com.cn](http://www.abclonal.com.cn)

## Product Information

### Source

Rabbit

### Isotype

IgG

### Purification

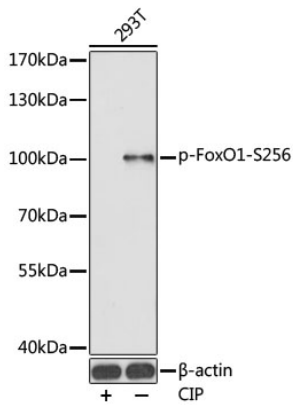
Affinity purification

### Storage

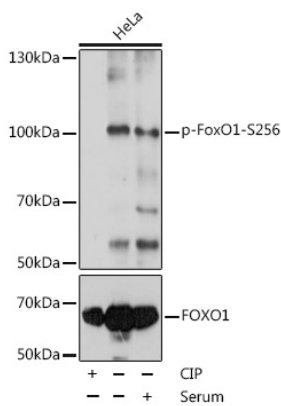
Store at -20°C. Avoid freeze / thaw cycles.

Buffer: PBS with 0.05% proclin300,50% glycerol,pH7.3.

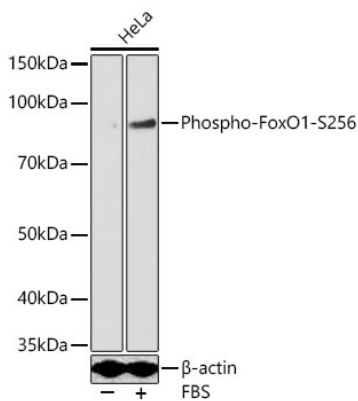
## Validation Data



Western blot analysis of lysates from 293T cells, using Phospho-FoxO1-S256 Rabbit pAb (AP0172). 293T were treated by CIP (20ul CIP for each 400ul cell lysate) at 37°C for 1 hour.  
 Secondary antibody: HRP-conjugated Goat anti-Rabbit IgG (H+L) (AS014) at 1:10000 dilution.  
 Lysates/proteins: 25µg per lane.  
 Blocking buffer: 3% BSA.  
 Detection: ECL Basic Kit (RM00020).  
 Exposure time: 90s.



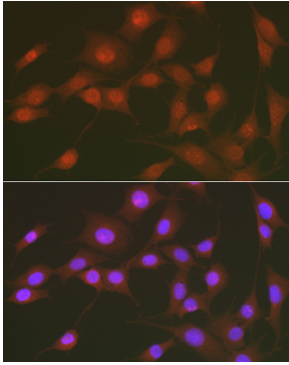
Western blot analysis of lysates from HeLa cells, using Phospho-FoxO1-S256 Rabbit pAb (A13862). HeLa cell lysate were treated by CIP (20ul CIP for each 400ul cell lysate) at 37°C for 1 hour or treated by 10% FBS at 37°C for 30 minutes after serum-starvation overnight..  
 Secondary antibody: HRP-conjugated Goat anti-Rabbit IgG (H+L) (AS014) at 1:10000 dilution.  
 Lysates/proteins: 25µg per lane.  
 Blocking buffer: 3% BSA.  
 Detection: ECL Basic Kit (RM00020).  
 Exposure time: 2s.



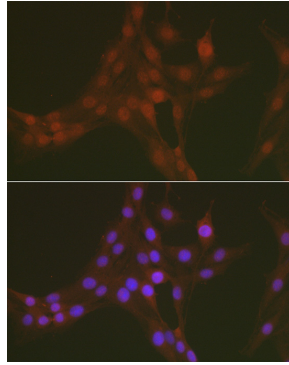
Western blot analysis of lysates from HeLa cells using Phospho-FoxO1-S256 Rabbit pAb (AP0172) at 1:1000 dilution. HeLa cells were treated by 10% FBS at 37°C for 30 minutes after serum-starvation overnight.  
 Secondary antibody: HRP-conjugated Goat anti-Rabbit IgG (H+L) (AS014) at 1:10000 dilution.  
 Lysates/proteins: 25 µg per lane.  
 Blocking buffer: 3% nonfat dry milk in TBST.  
 Detection: ECL Basic Kit (RM00020).  
 Exposure time: 30s.

## Validation Data

---



Immunofluorescence analysis of NIH/3T3 cells using Phospho-FoxO1-S256 Rabbit pAb (AP0172) at dilution of 1:50. Secondary antibody: Cy3-conjugated Goat anti-Rabbit IgG (H+L) (AS007) at 1:500 dilution. Blue: DAPI for nuclear staining.



Immunofluorescence analysis of PC-12 cells using Phospho-FoxO1-S256 Rabbit pAb (AP0172) at dilution of 1:50. Secondary antibody: Cy3-conjugated Goat anti-Rabbit IgG (H+L) (AS007) at 1:500 dilution. Blue: DAPI for nuclear staining.