

Phospho-RB-S807 Rabbit pAb

Catalog No.: AP0175 **1 Publications**

Basic Information

Observed MW

106kDa

Calculated MW

106kDa

Category

Primary antibody

Applications

WB

Cross-Reactivity

Human, Mouse

Background

The protein encoded by this gene is a negative regulator of the cell cycle and was the first tumor suppressor gene found. The encoded protein also stabilizes constitutive heterochromatin to maintain the overall chromatin structure. The active, hypophosphorylated form of the protein binds transcription factor E2F1. Defects in this gene are a cause of childhood cancer retinoblastoma (RB), bladder cancer, and osteogenic sarcoma.

Recommended Dilutions

WB 1:500 - 1:1000

Immunogen Information

Gene ID

5925

Swiss Prot

P06400

Immunogen

A phospho specific peptide corresponding to residues surrounding S807 of human RB

Synonyms

RB; pRb; OSRC; pp110; p105-Rb; PPP1R130; p110-RB1; Phospho-RB-S807

Contact

 | 400-999-6126

 | cn.market@abclonal.com.cn

 | www.abclonal.com.cn

Product Information

Source

Rabbit

Isotype

IgG

Purification

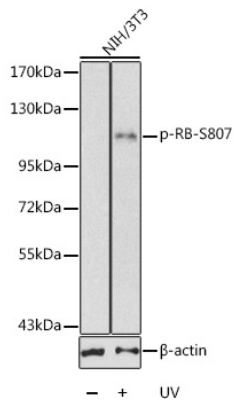
Affinity purification

Storage

Store at -20°C. Avoid freeze / thaw cycles.

Buffer: PBS with 0.02% sodium azide, 50% glycerol, pH7.3.

Validation Data



Western blot analysis of extracts from 3T3 cells, using Phospho-RB-S807 antibody (AP0175).
Secondary antibody: HRP Goat Anti-Rabbit IgG (H+L) (AS014) at 1:10000 dilution.
Lysates/proteins: 25µg per lane.
Blocking buffer: 3% BSA.