

# Phospho-CFL1-S3 Rabbit pAb

Catalog No.: AP0178 **4 Publications**

## Basic Information

### Observed MW

18kDa

### Calculated MW

19kDa

### Category

Primary antibody

### Applications

ELISA, WB, IHC-P, IF/ICC

### Cross-Reactivity

Human, Mouse, Rat

## Background

The protein encoded by this gene can polymerize and depolymerize F-actin and G-actin in a pH-dependent manner. Increased phosphorylation of this protein by LIM kinase aids in Rho-induced reorganization of the actin cytoskeleton. Cofilin is a widely distributed intracellular actin-modulating protein that binds and depolymerizes filamentous F-actin and inhibits the polymerization of monomeric G-actin in a pH-dependent manner. It is involved in the translocation of actin-cofilin complex from cytoplasm to nucleus.

## Recommended Dilutions

<b>WB</b>	1:500 - 1:2000
<b>IHC-P</b>	1:50 - 1:100
<b>IF/ICC</b>	1:100 - 1:200

## Immunogen Information

### Gene ID

1072

### Swiss Prot

P23528

### Immunogen

A synthetic phosphorylated peptide around S3 of human CFL1 (NP\_005498.1).

### Synonyms

CFL; cofilin; HEL-S-15; Phospho-CFL1-S3

## Contact

☎ | 400-999-6126

✉ | [cn.market@abclonal.com.cn](mailto:cn.market@abclonal.com.cn)

🌐 | [www.abclonal.com.cn](http://www.abclonal.com.cn)

## Product Information

### Source

Rabbit

### Isotype

IgG

### Purification

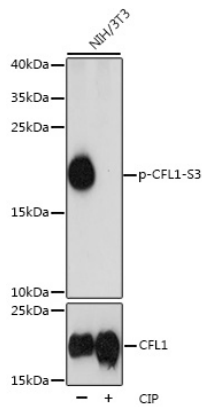
Affinity purification

### Storage

Store at -20°C. Avoid freeze / thaw cycles.

Buffer: PBS with 0.01% thimerosal, 50% glycerol, pH7.3.

## Validation Data



Western blot analysis of lysates from NIH/3T3 cells, using Phospho-CFL1-S3 Rabbit pAb (A1704). NIH/3T3 cells were treated by CIP(20uL/400ul) at 37°C for 1 hour.

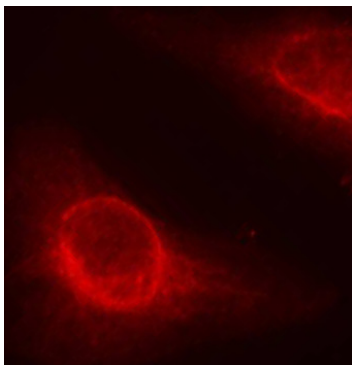
Secondary antibody: HRP Goat Anti-Rabbit IgG (H+L) (AS014) at 1:10000 dilution.

Lysates/proteins: 25µg per lane.

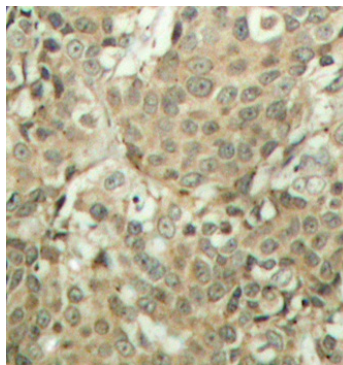
Blocking buffer: 3% BSA.

Detection: ECL Basic Kit (RM00020).

Exposure time: 3s.



Immunofluorescence analysis of methanol-fixed HeLa cells using Phospho-CFL1-S3 Rabbit pAb (AP0178).



Immunohistochemistry analysis of paraffin-embedded Human breast carcinoma tissue, using Phospho-CFL1-S3 Rabbit pAb (AP0178). Perform microwave antigen retrieval with 10 mM Tris/EDTA buffer pH 9.0 before commencing with IHC staining protocol.