

Phospho-IRS1-S312 Rabbit pAb

Catalog No.: AP0181 **2 Publications**

Basic Information

Observed MW

180kDa

Calculated MW

132kDa

Category

Primary antibody

Applications

WB

Cross-Reactivity

Human, Mouse, Rat

Background

This gene encodes a protein which is phosphorylated by insulin receptor tyrosine kinase. Mutations in this gene are associated with type II diabetes and susceptibility to insulin resistance.

Recommended Dilutions

WB 1:500 - 1:2000

Immunogen Information

Gene ID

3667

Swiss Prot

P35568

Immunogen

A phospho specific peptide corresponding to residues surrounding S312 of human IRS1

Synonyms

HIRS-1; Phospho-IRS1-S312

Contact

☎ | 400-999-6126

✉ | cn.market@abclonal.com.cn

🌐 | www.abclonal.com.cn

Product Information

Source

Rabbit

Isotype

IgG

Purification

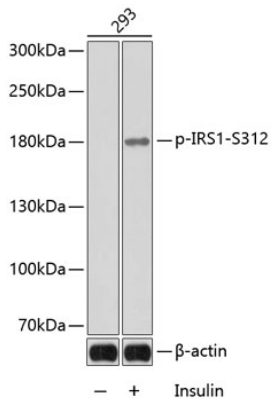
Affinity purification

Storage

Store at -20°C. Avoid freeze / thaw cycles.

Buffer: PBS with 0.02% sodium azide, 50% glycerol, pH 7.3.

Validation Data



Western blot analysis of lysates from 293 cells, using Phospho-IRS1-S312 Rabbit pAb (AP0181).
Secondary antibody: HRP Goat Anti-Rabbit IgG (H+L) (AS014) at 1:10000 dilution.
Lysates/proteins: 25µg per lane.
Blocking buffer: 3% BSA.