

Phospho-YWHAZ-S58 Rabbit pAb

Catalog No.: AP0195

Basic Information

Observed MW

28kDa

Calculated MW

28kDa

Category

Primary antibody

Applications

WB,IF/ICC

Cross-Reactivity

Human, Mouse, Rat

Background

This gene product belongs to the 14-3-3 family of proteins which mediate signal transduction by binding to phosphoserine-containing proteins. This highly conserved protein family is found in both plants and mammals, and this protein is 99% identical to the mouse, rat and sheep orthologs. The encoded protein interacts with IRS1 protein, suggesting a role in regulating insulin sensitivity. Several transcript variants that differ in the 5' UTR but that encode the same protein have been identified for this gene.

Recommended Dilutions

WB 1:500 - 1:2000

IF/ICC 1:100 - 1:200

Immunogen Information

Gene ID

7534

Swiss Prot

P63104

Immunogen

A phospho specific peptide corresponding to residues surrounding S58 of human YWHAZ

Synonyms

HEL4; YWHAD; KCIP-1; HEL-S-3; POPCHAS; HEL-S-93; 14-3-3-zeta; Phospho-YWHAZ-S58

Contact

☎ | 400-999-6126

✉ | cn.market@abclonal.com.cn

🌐 | www.abclonal.com.cn

Product Information

Source

Rabbit

Isotype

IgG

Purification

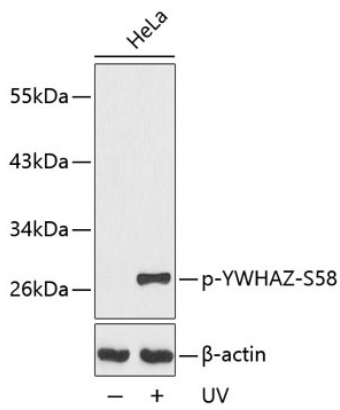
Affinity purification

Storage

Store at -20°C. Avoid freeze / thaw cycles.

Buffer: PBS with 0.02% sodium azide,50% glycerol,pH7.3.

Validation Data



Western blot analysis of lysates from HeLa cells, using Phospho-YWHAZ-S58 Rabbit pAb (AP0195).
Secondary antibody: HRP Goat Anti-Rabbit IgG (H+L) (AS014) at 1:10000 dilution.
Lysates/proteins: 25 μ g per lane.
Blocking buffer: 3% BSA.