

# Phospho-APP-T668 Rabbit pAb

Catalog No.: AP0200 **1 Publications**

## Basic Information

### Observed MW

87kDa, 120kDa

### Calculated MW

87kDa

### Category

Primary antibody

### Applications

WB

### Cross-Reactivity

Human, Mouse

## Background

This gene encodes a cell surface receptor and transmembrane precursor protein that is cleaved by secretases to form a number of peptides. Some of these peptides are secreted and can bind to the acetyltransferase complex APBB1/TIP60 to promote transcriptional activation, while others form the protein basis of the amyloid plaques found in the brains of patients with Alzheimer disease. In addition, two of the peptides are antimicrobial peptides, having been shown to have bacteriocidal and antifungal activities. Mutations in this gene have been implicated in autosomal dominant Alzheimer disease and cerebroarterial amyloidosis (cerebral amyloid angiopathy). Multiple transcript variants encoding several different isoforms have been found for this gene.

## Recommended Dilutions

WB 1:500 - 1:2000

## Immunogen Information

### Gene ID

351

### Swiss Prot

P05067

### Immunogen

Synthetic peptide. This information is considered to be commercially sensitive.

### Synonyms

AAA; AD1; PN2; ABPP; APPI; CVAP; ABETA; PN-II; preA4; CTFgamma; alpha-sAPP; Phospho-APP-T668

## Contact

☎ | 400-999-6126

✉ | [cn.market@abclonal.com.cn](mailto:cn.market@abclonal.com.cn)

🌐 | [www.abclonal.com.cn](http://www.abclonal.com.cn)

## Product Information

### Source

Rabbit

### Isotype

IgG

### Purification

Affinity purification

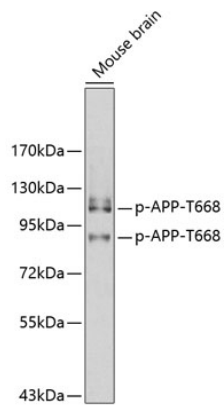
### Storage

Store at -20°C. Avoid freeze / thaw cycles.

Buffer: PBS with 0.02% sodium azide, 50% glycerol, pH7.3.

## Validation Data

---



Western blot analysis of lysates from mouse brain tissue using Phospho-APP-T668 Rabbit pAb (AP0200).  
Secondary antibody: HRP-conjugated Goat anti-Rabbit IgG (H+L) (AS014) at 1:10000 dilution.  
Lysates/proteins: 25µg per lane.  
Blocking buffer: 3% BSA.