

Phospho-MAP2K1-S217/MAP2K2-S221 Rabbit pAb

Catalog No.: AP0209 **13 Publications**

Basic Information

Observed MW

44kDa

Calculated MW

40kDa/43kDa/44kDa

Category

Primary antibody

Applications

WB,ELISA

Cross-Reactivity

Human, Mouse, Rat

Background

The protein encoded by this gene is a member of the dual specificity protein kinase family, which acts as a mitogen-activated protein (MAP) kinase kinase. MAP kinases, also known as extracellular signal-regulated kinases (ERKs), act as an integration point for multiple biochemical signals. This protein kinase lies upstream of MAP kinases and stimulates the enzymatic activity of MAP kinases upon wide variety of extra- and intracellular signals. As an essential component of MAP kinase signal transduction pathway, this kinase is involved in many cellular processes such as proliferation, differentiation, transcription regulation and development. [provided by RefSeq, Jul 2008]

Recommended Dilutions

WB 1:2000 - 1:7000

ELISA Recommended starting concentration is 1 µg/mL. Please optimize the concentration based on your specific assay requirements.

Immunogen Information

Gene ID

5604/5605

Swiss Prot

Q02750/P36507

Immunogen

A synthetic phosphorylated peptide around S217 & S221 of human MAP2K1/MAP2K2/MAP2K1 (NP_002746.1).

Synonyms

MEK1/MEK2; Phospho-MAP2K1-S217/MAP2K2-S221

Contact

☎ | 400-999-6126

✉ | cn.market@abclonal.com.cn

🌐 | www.abclonal.com.cn

Product Information

Source

Rabbit

Isotype

IgG

Purification

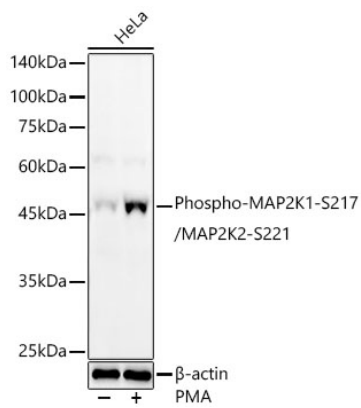
Affinity purification

Storage

Store at -20°C. Avoid freeze / thaw cycles.

Buffer: PBS with 0.02% sodium azide, 50% glycerol, pH7.3.

Validation Data



Western blot analysis of lysates from HeLa cells using Phospho-MAP2K1-S217/MAP2K2-S221 Rabbit pAb (AP0209) at 1:6000 dilution. HeLa cells were treated by PMA (200 nM) at 37°C for 15 minutes after serum-starvation overnight.
Secondary antibody: HRP-conjugated Goat anti-Rabbit IgG (H+L) (AS014) at 1:10000 dilution.
Lysates/proteins: 25 µg per lane.
Blocking buffer: 3% nonfat dry milk in TBST.
Detection: ECL Enhanced Kit (RM00021).
Exposure time: 90s.