

# Phospho-Stathmin 1-S16 Rabbit pAb

Catalog No.: AP0229

## Basic Information

### Observed MW

15kDa

### Calculated MW

17kDa

### Category

Primary antibody

### Applications

ELISA, WB

### Cross-Reactivity

Human, Mouse

## Background

This gene belongs to the stathmin family of genes. It encodes a ubiquitous cytosolic phosphoprotein proposed to function as an intracellular relay integrating regulatory signals of the cellular environment. The encoded protein is involved in the regulation of the microtubule filament system by destabilizing microtubules. It prevents assembly and promotes disassembly of microtubules. Multiple transcript variants encoding different isoforms have been found for this gene.

## Recommended Dilutions

WB 1:500 - 1:2000

## Immunogen Information

### Gene ID

3925

### Swiss Prot

P16949

### Immunogen

A synthetic phosphorylated peptide around S16 of human Stathmin 1 (NP\_001138926.1).

### Synonyms

Lag; SMN; OP18; PP17; PP19; PR22; LAP18; C1orf215; Phospho-Stathmin 1-S16

## Contact

 | 400-999-6126

 | [cn.market@abclonal.com.cn](mailto:cn.market@abclonal.com.cn)

 | [www.abclonal.com.cn](http://www.abclonal.com.cn)

## Product Information

### Source

Rabbit

### Isotype

IgG

### Purification

Affinity purification

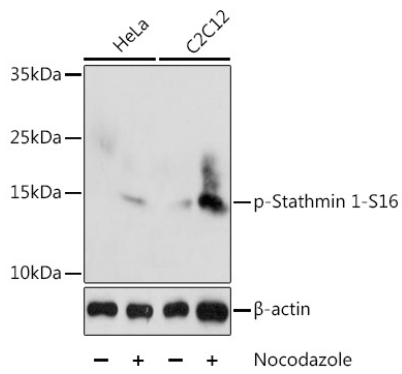
### Storage

Store at -20°C. Avoid freeze / thaw cycles.

Buffer: PBS with 0.01% thimerosal, 50% glycerol, pH7.3.

## Validation Data

---



Western blot analysis of lysates from HeLa and C2C12 cells, using Phospho-Stathmin 1-S16 Rabbit pAb (AP0229) at 1:2000 dilution. HeLa and C2C12 cells were treated by Nocodazole (50ng/mL) for 20 hours. Secondary antibody: HRP-conjugated Goat anti-Rabbit IgG (H+L) (AS014) at 1:10000 dilution. Lysates/proteins: 25 $\mu$ g per lane. Blocking buffer: 3% BSA. Detection: ECL Enhanced Kit (RM00021). Exposure time: 90s.