

Phospho-ERK1-Y204 Rabbit pAb

Catalog No.: AP0235

12 Publications

Basic Information

Observed MW

42kDa/44kDa

Calculated MW

43kDa

Category

Primary antibody

Applications

WB, IHC-P, IF/ICC, IP, ELISA

Cross-Reactivity

Human, Mouse, Rat

Background

The protein encoded by this gene is a member of the MAP kinase family. MAP kinases, also known as extracellular signal-regulated kinases (ERKs), act in a signaling cascade that regulates various cellular processes such as proliferation, differentiation, and cell cycle progression in response to a variety of extracellular signals. This kinase is activated by upstream kinases, resulting in its translocation to the nucleus where it phosphorylates nuclear targets. Alternatively spliced transcript variants encoding different protein isoforms have been described.

Recommended Dilutions

WB 1:500 - 1:1000**IHC-P** 1:50 - 1:100**IF/ICC** 1:100 - 1:200**IP** 0.5µg-4µg antibody for
200µg-400µg extracts of
whole cells**ELISA** Recommended starting
concentration is 1 µg/mL.
Please optimize the
concentration based on
your specific assay
requirements.

Immunogen Information

Gene ID

5595

Swiss Prot

P27361

Immunogen

Synthetic peptide. This information is considered to be commercially sensitive.

Synonyms

ERK1; ERT2; ERK-1; PRKM3; P44ERK1; P44MAPK; HS44KDAP; HUMKER1A; p44-ERK1; p44-MAPK; Phospho-ERK1-Y204

Product Information

Source

Rabbit

Isotype

IgG

Purification


Affinity purification

Storage

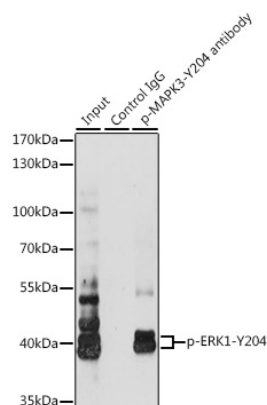
Store at -20°C. Avoid freeze / thaw cycles.

Buffer: PBS with 0.01% thimerosal, 50% glycerol, pH7.3.

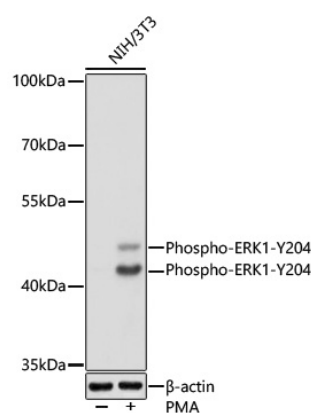
Contact

 | 400-999-6126 | cn.market@abclonal.com.cn | www.abclonal.com.cn

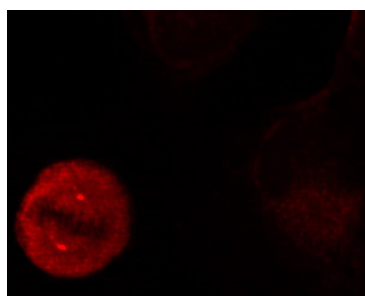
Validation Data



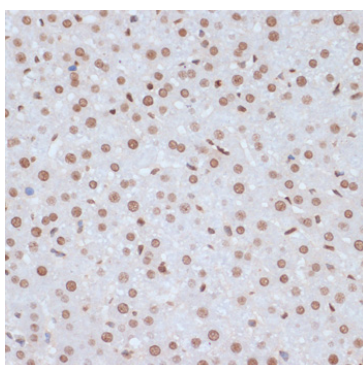
Immunoprecipitation analysis of 200 µg extracts of Jurkat cells, using 3 µg Phospho-ERK1-Y204 Rabbit pAb (AP0235). Western blot was performed from the immunoprecipitate using Phospho-ERK1-Y204 Rabbit pAb (AP0235) at a dilution of 1:1000. Jurkat cells were treated with PMA/TPA (200 nM) at 37°C for 10 minutes.



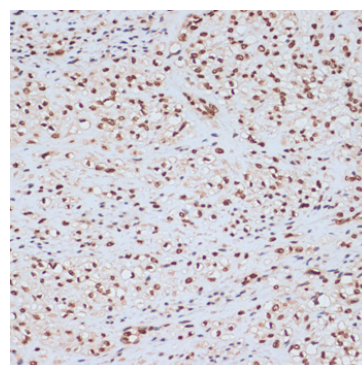
Western blot analysis of lysates from NIH/3T3 cells using Phospho-ERK1-Y204 Rabbit pAb (AP0235) at 1:1000 dilution incubated overnight at 4°C. NIH/3T3 cells were treated with PMA/TPA (200 nM) at 37°C for 30 minutes after serum-starvation overnight. Secondary antibody: HRP-conjugated Goat anti-Rabbit IgG (H+L) (AS014) at 1:10000 dilution. Lysates/proteins: 25µg per lane. Blocking buffer: 3% nonfat dry milk in TBST. Detection: ECL Basic Kit (RM00020). Exposure time: 1s.



Immunofluorescence analysis of methanol-fixed HeLa cells showing centrosome and nuclear staining using Phospho-ERK1-Y204 Rabbit pAb (AP0235).

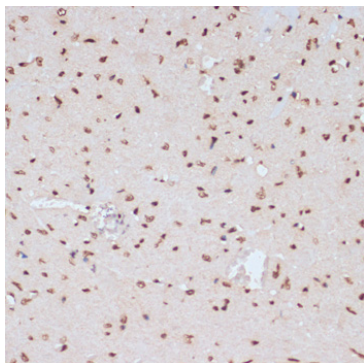


Immunohistochemistry analysis of paraffin-embedded Rat liver using Phospho-ERK1-Y204 Rabbit pAb (AP0235) at dilution of 1:100 (40x lens). Microwave antigen retrieval performed with 0.01M Tris/EDTA Buffer (pH 9.0) prior to IHC staining.



Immunohistochemistry analysis of paraffin-embedded Human uterus using Phospho-ERK1-Y204 Rabbit pAb (AP0235) at dilution of 1:100 (40x lens). Microwave antigen retrieval performed with 0.01M Tris/EDTA Buffer (pH 9.0) prior to IHC staining.

Validation Data



Immunohistochemistry analysis of paraffin-embedded Mouse heart using Phospho-ERK1-Y204 Rabbit pAb (AP0235) at dilution of 1:100 (40x lens). Microwave antigen retrieval performed with 0.01M Tris/EDTA Buffer (pH 9.0) prior to IHC staining.