

# Phospho-HSP27/HSPB1-S78 Rabbit pAb

Catalog No.: AP0236

## Basic Information

### Observed MW

28kDa

### Calculated MW

23kDa

### Category

Primary antibody

### Applications

ELISA, WB, IF/ICC

### Cross-Reactivity

Human

## Background

This gene encodes a member of the small heat shock protein (HSP20) family of proteins. In response to environmental stress, the encoded protein translocates from the cytoplasm to the nucleus and functions as a molecular chaperone that promotes the correct folding of other proteins. This protein plays an important role in the differentiation of a wide variety of cell types. Expression of this gene is correlated with poor clinical outcome in multiple human cancers, and the encoded protein may promote cancer cell proliferation and metastasis, while protecting cancer cells from apoptosis. Mutations in this gene have been identified in human patients with Charcot-Marie-Tooth disease and distal hereditary motor neuropathy.

## Recommended Dilutions

<b>WB</b>	1:500 - 1:2000
<b>IF/ICC</b>	1:100 - 1:200

## Immunogen Information

### Gene ID

3315

### Swiss Prot

P04792

### Immunogen

A synthetic phosphorylated peptide around S78 of human HSP27/HSPB1 (NP\_001531.1).

### Synonyms

CMT2F; HMN2B; HSP27; HSP28; Hsp25; SRP27; HS.76067; HEL-S-102; Phospho-HSP27/HSPB1-S78

## Contact

	400-999-6126
	cn.market@abclonal.com.cn
	www.abclonal.com.cn

## Product Information

### Source

Rabbit

### Isotype

IgG

### Purification

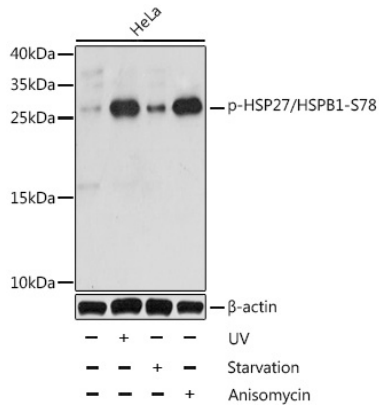
Affinity purification

### Storage

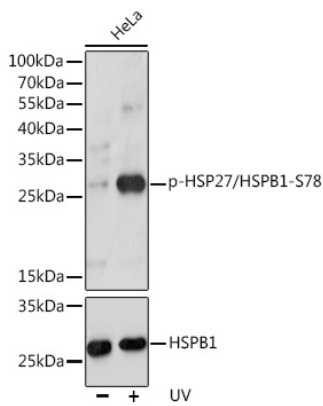
Store at -20°C. Avoid freeze / thaw cycles.

Buffer: PBS with 0.01% thimerosal, 50% glycerol, pH7.3.

## Validation Data



Western blot analysis of lysates from HeLa cells, using Phospho-HSP27/HSPB1-S78 Rabbit pAb (AP0236) at 1:1000 dilution. HeLa cells were treated by UV for 15-30 minutes or treated by serum-starvation overnight or treated by Anisomycin (25µg/mL) for 30 minutes after serum-starvation overnight. Secondary antibody: HRP-conjugated Goat anti-Rabbit IgG (H+L) (AS014) at 1:10000 dilution. Lysates/proteins: 25µg per lane. Blocking buffer: 3% BSA. Detection: ECL Basic Kit (RM00020). Exposure time: 30s.



Western blot analysis of lysates from HeLa cells, using Phospho-HSP27/HSPB1-S78 pAb (AP0236) at 1:1000 dilution or HSP27/HSPB1 antibody (A16332). HeLa cells were treated by UV at room temperature for 15-30 minutes. Secondary antibody: HRP-conjugated Goat anti-Rabbit IgG (H+L) (AS014) at 1:10000 dilution. Lysates/proteins: 25µg per lane. Blocking buffer: 3% BSA. Detection: ECL Basic Kit (RM00020). Exposure time: 30s.