

# Phospho-GSK3 $\beta$ -Y216 + GSK3 $\alpha$ -Y279 Rabbit pAb

Catalog No.: AP0261 **13 Publications**

## Basic Information

### Observed MW

47 kDa/51 kDa

### Calculated MW

47 kDa

### Category

Primary antibody

### Applications

WB,IHC-P,ELISA

### Cross-Reactivity

Human, Mouse, Rat

## Background

The protein encoded by this gene is a serine-threonine kinase, belonging to the glycogen synthase kinase subfamily. It is involved in energy metabolism, neuronal cell development, and body pattern formation. Polymorphisms in this gene have been implicated in modifying risk of Parkinson disease, and studies in mice show that overexpression of this gene may be relevant to the pathogenesis of Alzheimer disease. Alternatively spliced transcript variants encoding different isoforms have been found for this gene.

## Recommended Dilutions

**WB** 1:500 - 1:4000

**IHC-P** 1:50 - 1:200

**ELISA** Recommended starting concentration is 1  $\mu$ g/mL. Please optimize the concentration based on your specific assay requirements.

## Immunogen Information

### Gene ID

2931/2932

### Swiss Prot

P49840/P49841

### Immunogen

Synthetic peptide. This information is considered to be commercially sensitive.

### Synonyms

GSK3B; gsk-3 $\beta$ ; Phospho-GSK3 $\beta$ -Y216 + GSK3 $\alpha$ -Y279

## Contact

☎ | 400-999-6126

✉ | [cn.market@abclonal.com.cn](mailto:cn.market@abclonal.com.cn)

🌐 | [www.abclonal.com.cn](http://www.abclonal.com.cn)

## Product Information

### Source

Rabbit

### Isotype

IgG

### Purification

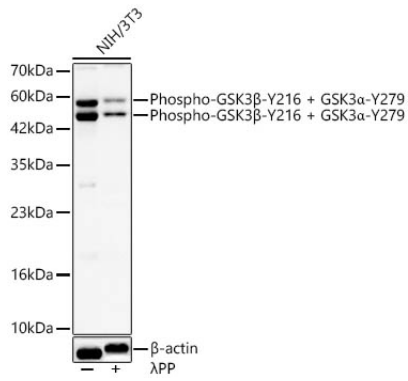
Affinity purification

### Storage

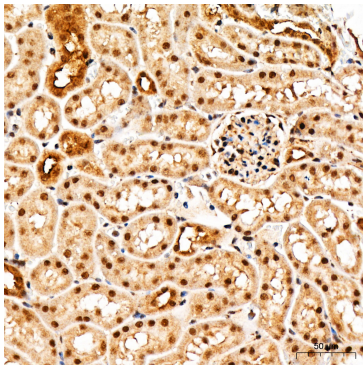
Store at -20°C. Avoid freeze / thaw cycles.

Buffer: PBS containing 50% glycerol, preserved with proclin300 or sodium azide (as specified on the Certificate of Analysis), pH 7.3.

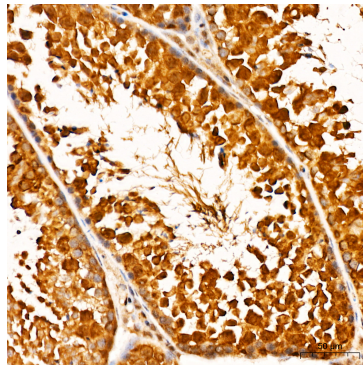
## Validation Data



Western blot analysis of lysates from NIH/3T3 cells using Phospho-GSK3β-Y216 + GSK3α-Y279 Rabbit pAb (AP0261) at 1:1000 dilution. NIH/3T3 cells were treated by λPP (20uL/400ul) at 37°C for 1 hour. Secondary antibody: HRP-conjugated Goat anti-Rabbit IgG (H+L) (AS014) at 1:10000 dilution. Lysates/proteins: 25 µg per lane. Blocking buffer: 3% nonfat dry milk in TBST. Detection: ECL Basic Kit (RM00020). Exposure time: 90s.



Immunohistochemistry analysis of paraffin-embedded Mouse kidney tissue using Phospho-GSK3β-Y216 + GSK3α-Y279 Rabbit pAb (AP0261) at a dilution of 1:100 (40x lens). High pressure antigen retrieval was performed with 0.01 M citrate buffer (pH 6.0) prior to IHC staining.



Immunohistochemistry analysis of paraffin-embedded Mouse testis tissue using Phospho-GSK3β-Y216 + GSK3α-Y279 Rabbit pAb (AP0261) at a dilution of 1:100 (40x lens). High pressure antigen retrieval was performed with 0.01 M citrate buffer (pH 6.0) prior to IHC staining.