

Phospho-STAT2-Y690 Rabbit pAb

Catalog No.: AP0284 **10 Publications**

Basic Information

Observed MW

97kDa

Calculated MW

98kDa

Category

Primary antibody

Applications

ELISA, WB

Cross-Reactivity

Human, Mouse, Rat

Background

The protein encoded by this gene is a member of the STAT protein family. In response to cytokines and growth factors, STAT family members are phosphorylated by the receptor associated kinases, and then form homo- or heterodimers that translocate to the cell nucleus where they act as transcription activators. In response to interferon (IFN), this protein forms a complex with STAT1 and IFN regulatory factor family protein p48 (ISGF3G), in which this protein acts as a transactivator, but lacks the ability to bind DNA directly. The protein mediates innate antiviral activity. Mutations in this gene result in Immunodeficiency 44.

Recommended Dilutions

WB 1:100 - 1:500

Immunogen Information

Gene ID

6773

Swiss Prot

P52630

Immunogen

A synthetic phosphorylated peptide around Y690 of human STAT2 (NP_005410.1).

Synonyms

P113; IMD44; ISGF-3; PTORCH3; STAT113; Phospho-STAT2-Y690

Contact

 | 400-999-6126

 | cn.market@abclonal.com.cn

 | www.abclonal.com.cn

Product Information

Source

Rabbit

Isotype

IgG

Purification

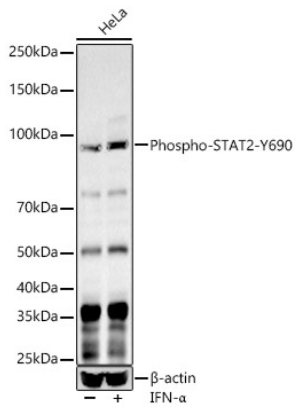
Affinity purification

Storage

Store at -20°C. Avoid freeze / thaw cycles.

Buffer: PBS with 0.01% thimerosal, 50% glycerol, pH7.3.

Validation Data



Western blot analysis of lysates from HeLa cells, using Phospho-STAT2-Y690 Rabbit pAb (AP0284) at 1:500 dilution. HeLa cells were treated by IFN- α (100 ng/ml) at 37°C for 30 minutes after serum-starvation overnight.

Secondary antibody: HRP-conjugated Goat anti-Rabbit IgG (H+L) (AS014) at 1:10000 dilution.

Lysates/proteins: 25 μ g per lane.

Blocking buffer: 3% nonfat dry milk in TBST.

Detection: ECL Basic Kit (RM00020).

Exposure time: 60s.