

# Phospho-CDK6-Y24 Rabbit pAb

**Catalog No.: AP0289**

## Basic Information

**Observed MW**

37kDa

**Calculated MW**

37kDa

**Category**

Primary antibody

**Applications**

WB,IF/ICC

**Cross-Reactivity**

Human, Mouse

## Background

The protein encoded by this gene is a member of the CMGC family of serine/threonine protein kinases. This kinase is a catalytic subunit of the protein kinase complex that is important for cell cycle G1 phase progression and G1/S transition. The activity of this kinase first appears in mid-G1 phase, which is controlled by the regulatory subunits including D-type cyclins and members of INK4 family of CDK inhibitors. This kinase, as well as CDK4, has been shown to phosphorylate, and thus regulate the activity of, tumor suppressor protein Rb. Altered expression of this gene has been observed in multiple human cancers. A mutation in this gene resulting in reduced cell proliferation, and impaired cell motility and polarity, and has been identified in patients with primary microcephaly.

## Recommended Dilutions

**WB** 1:500 - 1:2000**IF/ICC** 1:100 - 1:200

## Immunogen Information

**Gene ID**

1021

**Swiss Prot**

Q00534

**Immunogen**

A phospho specific peptide corresponding to residues surrounding Y24 of human CDK6

**Synonyms**

MCPH12; PLSTIRE; Phospho-CDK6-Y24

## Contact

 | 400-999-6126 | [cn.market@abclonal.com.cn](mailto:cn.market@abclonal.com.cn) | [www.abclonal.com.cn](http://www.abclonal.com.cn)

## Product Information

**Source**

Rabbit

**Isotype**

IgG

**Purification**

Affinity purification

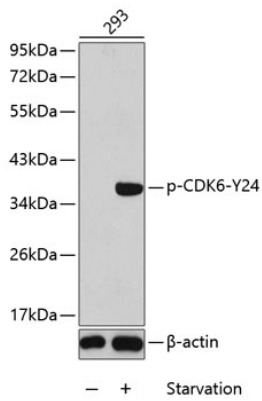
**Storage**

Store at -20°C. Avoid freeze / thaw cycles.

Buffer: PBS with 0.02% sodium azide,50% glycerol,pH7.3.

## Validation Data

---



Western blot analysis of lysates from 293 cells using Phospho-CDK6-Y24 Rabbit pAb (AP0289).  
Secondary antibody: HRP Goat Anti-Rabbit IgG (H+L) (AS014) at 1:10000 dilution.  
Lysates/proteins: 25 $\mu$ g per lane.  
Blocking buffer: 3% BSA.