

Phospho-ATF4-S245 Rabbit pAb

Catalog No.: AP0309 **2 Publications**

Basic Information

Observed MW

45kDa

Calculated MW

39kDa

Category

Primary antibody

Applications

WB

Cross-Reactivity

Human

Background

This gene encodes a transcription factor that was originally identified as a widely expressed mammalian DNA binding protein that could bind a tax-responsive enhancer element in the LTR of HTLV-1. The encoded protein was also isolated and characterized as the cAMP-response element binding protein 2 (CREB-2). The protein encoded by this gene belongs to a family of DNA-binding proteins that includes the AP-1 family of transcription factors, cAMP-response element binding proteins (CREBs) and CREB-like proteins. These transcription factors share a leucine zipper region that is involved in protein-protein interactions, located C-terminal to a stretch of basic amino acids that functions as a DNA binding domain. Two alternative transcripts encoding the same protein have been described. Two pseudogenes are located on the X chromosome at q28 in a region containing a large inverted duplication.

Recommended Dilutions

WB 1:500 - 1:2000

Immunogen Information

Gene ID

468

Swiss Prot

P18848

Immunogen

A phospho specific peptide corresponding to residues surrounding S245 of human ATF4

Synonyms

CREB2; TXREB; CREB-2; TAXREB67; Phospho-ATF4-S245

Contact

☎ | 400-999-6126

✉ | cn.market@abclonal.com.cn

🌐 | www.abclonal.com.cn

Product Information

Source

Rabbit

Isotype

IgG

Purification

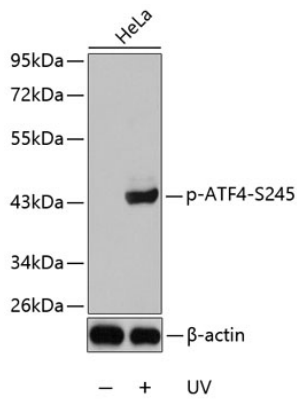
Affinity purification

Storage

Store at -20°C. Avoid freeze / thaw cycles.

Buffer: PBS with 0.02% sodium azide, 50% glycerol, pH7.3.

Validation Data



Western blot analysis of lysates from HeLa cells using Phospho-ATF4-S245 Rabbit pAb (AP0309).
Secondary antibody: HRP Goat Anti-Rabbit IgG (H+L) (AS014) at 1:10000 dilution.
Lysates/proteins: 25µg per lane.
Blocking buffer: 3% BSA.