

Phospho-CDK2-T160 Rabbit pAb

Catalog No.: AP0325 **2 Publications**

Basic Information

Observed MW

32kDa/34kDa

Calculated MW

34kDa

Category

Primary antibody

Applications

ELISA, WB, IHC-P

Cross-Reactivity

Human, Mouse, Rat

Background

This gene encodes a member of a family of serine/threonine protein kinases that participate in cell cycle regulation. The encoded protein is the catalytic subunit of the cyclin-dependent protein kinase complex, which regulates progression through the cell cycle. Activity of this protein is especially critical during the G1 to S phase transition. This protein associates with and regulated by other subunits of the complex including cyclin A or E, CDK inhibitor p21Cip1 (CDKN1A), and p27Kip1 (CDKN1B). Alternative splicing results in multiple transcript variants.

Recommended Dilutions

WB	1:100 - 1:500
IHC-P	1:50 - 1:100

Immunogen Information

Gene ID

1017

Swiss Prot

P24941

Immunogen

A synthetic phosphorylated peptide around T160 of human CDK2 (NP_001789.2/NP_001249.1).

Synonyms

CDKN2; p33(CDK2); Phospho-CDK2-T160

Contact

☎ | 400-999-6126

✉ | cn.market@abclonal.com.cn

🌐 | www.abclonal.com.cn

Product Information

Source

Rabbit

Isotype

IgG

Purification

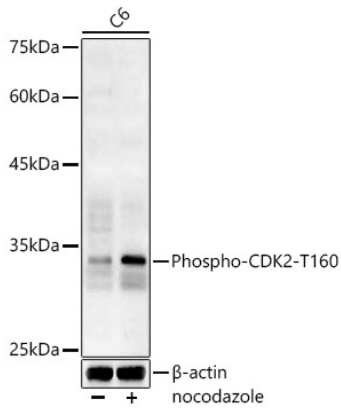
Affinity purification

Storage

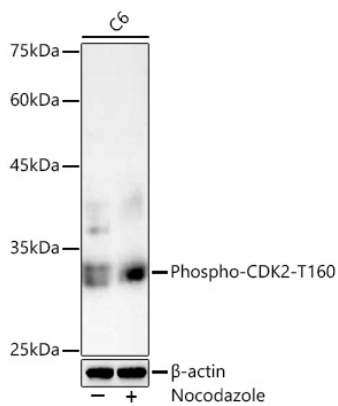
Store at -20°C. Avoid freeze / thaw cycles.

Buffer: PBS with 0.05% proclin300, 50% glycerol, pH7.3.

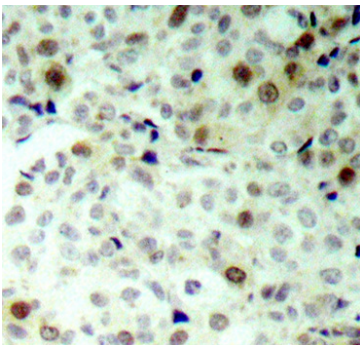
Validation Data



Western blot analysis of lysates from C6 cells, using Phospho-CDK2-T160 Rabbit pAb (AP0325) at 1:400 dilution. C6 cells were treated by Nocodazole (10 ng/ml) at 37°C for 20 hours.
Secondary antibody: HRP-conjugated Goat anti-Rabbit IgG (H+L) (AS014) at 1:10000 dilution.
Lysates/proteins: 25µg per lane.
Blocking buffer: 3% nonfat dry milk in TBST.
Detection: ECL Basic Kit (RM00020).
Exposure time: 90s.



Western blot analysis of lysates from C6 cells using Phospho-CDK2-T160 Rabbit pAb (AP0325) at 1:1000 dilution. C6 cells were treated by Nocodazole (10 ng/ml) at 37°C for 20 hours.
Secondary antibody: HRP-conjugated Goat anti-Rabbit IgG (H+L) (AS014) at 1:10000 dilution.
Lysates/proteins: 20 µg per lane.
Blocking buffer: 3% nonfat dry milk in TBST.
Detection: ECL Basic Kit (RM00020).
Exposure time: 3s.



Immunohistochemistry analysis of paraffin-embedded Human breast carcinoma using Phospho-CDK2-T160 Rabbit pAb (AP0325). Microwave antigen retrieval performed with 0.01M Tris/EDTA Buffer (pH 9.0) prior to IHC staining.