

# Phospho-CDK2-T160 Rabbit pAb

Catalog No.: AP0325SP **3 Publications**

## Basic Information

### Observed MW

34 kDa

### Calculated MW

34 kDa/30 kDa

### Category

Primary antibody

### Applications

WB,IF-P,IHC-P,ELISA

### Cross-Reactivity

Human, Mouse, Rat

## Background

This gene encodes a member of a family of serine/threonine protein kinases that participate in cell cycle regulation. The encoded protein is the catalytic subunit of the cyclin-dependent protein kinase complex, which regulates progression through the cell cycle. Activity of this protein is especially critical during the G1 to S phase transition. This protein associates with and regulated by other subunits of the complex including cyclin A or E, CDK inhibitor p21Cip1 (CDKN1A), and p27Kip1 (CDKN1B). Alternative splicing results in multiple transcript variants.

## Recommended Dilutions

**WB** 1:1000 - 1:3000

**IF-P** 1:50 - 1:400

**IHC-P** 1:200 - 1:800

**ELISA** Recommended starting concentration is 1 µg/mL. Please optimize the concentration based on your specific assay requirements. For high-ratio antibody dilutions ( $\geq 1:10000$ ) a sequential dilution method is strongly recommended to ensure measurement accuracy.

## Immunogen Information

### Gene ID

1017

### Swiss Prot

P24941

### Immunogen

Synthetic peptide. This information is considered to be commercially sensitive.

### Synonyms

CDKN2; p33(CDK2)

## Product Information

### Source

Rabbit

### Isotype

IgG

### Purification

Affinity purification

### Storage

Store at -20°C. Avoid freeze / thaw cycles.

Buffer: PBS, pH 7.3, containing 50% glycerol. Preserved with Proclin300 or sodium azide.

May contain 0.05% BSA as specified on the Certificate of Analysis.

## Contact

---

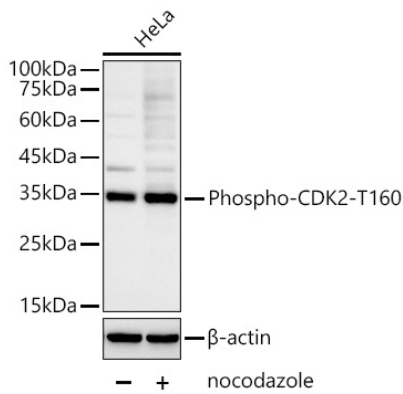
 | 400-999-6126

 | [cn.market@abclonal.com.cn](mailto:cn.market@abclonal.com.cn)

 | [www.abclonal.com.cn](http://www.abclonal.com.cn)

---

## Validation Data



Western blot analysis of lysates from HeLa cells using Phospho-CDK2-T160 Rabbit pAb (AP0325SP) at 1:3000 dilution incubated overnight at 4°C. HeLa cells were treated with Nocodazole (100ng/ml) at 37°C for 16 hours.

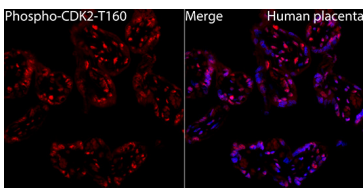
Secondary antibody: HRP-conjugated Goat anti-Rabbit IgG (H+L) (AS014) at 1:10000 dilution.

Lysates/proteins: 30 µg per lane.

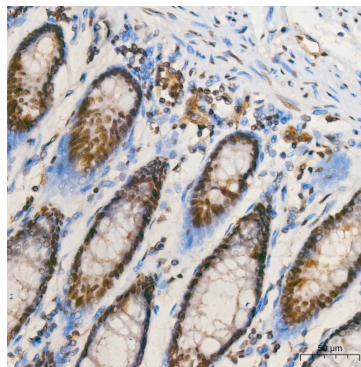
Blocking buffer: 3% nonfat dry milk in TBST.

Detection: ECL Basic Kit (RM00020).

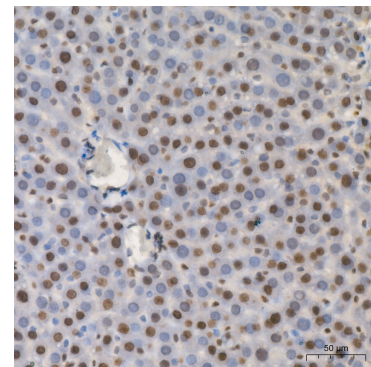
Exposure time: 90 s.



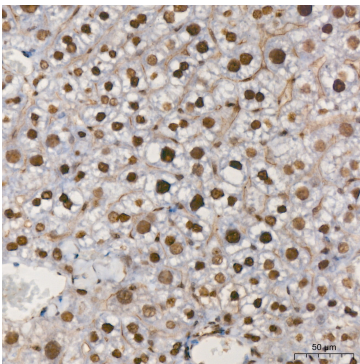
Immunofluorescence analysis of paraffin-embedded Human placenta tissue using Phospho-CDK2-T160 Rabbit pAb (AP0325SP) at a dilution of 1:50 (40x lens). Secondary antibody: Cy3-conjugated Goat anti-Rabbit IgG (H+L) (AS007) at 1:500 dilution. Blue: DAPI for nuclear staining. High pressure antigen retrieval performed with 0.01M Citrate Buffer (pH 6.0) prior to IF staining.



Immunohistochemistry analysis of paraffin-embedded Human colon tissue using Phospho-CDK2-T160 Rabbit pAb (AP0325SP) at a dilution of 1:200 (40x lens). High pressure antigen retrieval performed with 0.01M Citrate Buffer (pH 6.0) prior to IHC staining.



Immunohistochemistry analysis of paraffin-embedded Mouse liver tissue using Phospho-CDK2-T160 Rabbit pAb (AP0325SP) at a dilution of 1:200 (40x lens). High pressure antigen retrieval performed with 0.01M Citrate Buffer (pH 6.0) prior to IHC staining.



Immunohistochemistry analysis of paraffin-embedded Rat liver tissue using Phospho-CDK2-T160 Rabbit pAb (AP0325SP) at a dilution of 1:200 (40x lens). High pressure antigen retrieval performed with 0.01M Citrate Buffer (pH 6.0) prior to IHC staining.