

Phospho-Casein Kinase 2 alpha (CSNK2A1)-T360/S362 Rabbit pAb

Catalog No.: AP0335 **1 Publications**

Basic Information

Observed MW

45kDa

Calculated MW

45kDa

Category

Primary antibody

Applications

ELISA, WB

Cross-Reactivity

Human, Mouse

Background

Casein kinase II is a serine/threonine protein kinase that phosphorylates acidic proteins such as casein. It is involved in various cellular processes, including cell cycle control, apoptosis, and circadian rhythm. The kinase exists as a tetramer and is composed of an alpha, an alpha-prime, and two beta subunits. The alpha subunits contain the catalytic activity while the beta subunits undergo autophosphorylation. The protein encoded by this gene represents the alpha subunit. Multiple transcript variants encoding different protein isoforms have been found for this gene.

Recommended Dilutions

WB 1:500 - 1:2000

Immunogen Information

Gene ID

1457

Swiss Prot

P68400

Immunogen

A phospho specific peptide corresponding to residues surrounding T360/S362 of human Casein Kinase 2 alpha (CSNK2A1)

Synonyms

CKII; Cka1; Cka2; CK2A1; OCNDS; Phospho-Casein Kinase 2 alpha (CSNK2A1)-T360/S362

Contact

 | 400-999-6126 | cn.market@abclonal.com.cn | www.abclonal.com.cn

Product Information

Source

Rabbit

Isotype

IgG

Purification

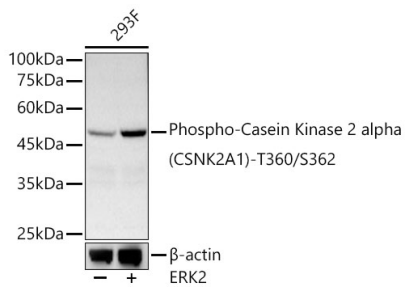
Affinity purification

Storage

Store at -20°C. Avoid freeze / thaw cycles.

Buffer: PBS with 0.02% sodium azide, 50% glycerol, pH 7.3.

Validation Data



Western blot analysis of lysates from 293F cells using Phospho-Casein Kinase 2 alpha (CSNK2A1)-T360/S362 Rabbit pAb (AP0335) at 1:400 dilution. 293F cells were treated by ERK2 (100ng/ml) at 37°C for 30 minutes.

Secondary antibody: HRP-conjugated Goat anti-Rabbit IgG (H+L) (AS014) at 1:10000 dilution.

Lysates/proteins: 25 µg per lane.

Blocking buffer: 3% nonfat dry milk in TBST.

Detection: ECL Basic Kit (RM00020).

Exposure time: 60s.