

Phospho-MYL12A-S18 Rabbit pAb

Catalog No.: AP0412 **2 Publications**

Basic Information

Observed MW

20kDa

Calculated MW

20kDa

Category

Primary antibody

Applications

WB

Cross-Reactivity

Human, Rat

Background

This gene encodes a nonsarcomeric myosin regulatory light chain. This protein is activated by phosphorylation and regulates smooth muscle and non-muscle cell contraction. This protein may also be involved in DNA damage repair by sequestering the transcriptional regulator apoptosis-antagonizing transcription factor (AATF)/Che-1 which functions as a repressor of p53-driven apoptosis. Alternate splicing results in multiple transcript variants. A pseudogene of this gene is found on chromosome 8.

Recommended Dilutions

WB 1:500 - 1:2000

Immunogen Information

Gene ID

10627

Swiss Prot

P19105

Immunogen

Synthetic peptide. This information is considered to be commercially sensitive.

Synonyms

MLCB; MRCL3; MRLC3; MYL2B; MLC-2B; HEL-S-24; Phospho-MYL12A-S18

Contact

 | 400-999-6126

 | cn.market@abclonal.com.cn

 | www.abclonal.com.cn

Product Information

Source

Rabbit

Isotype

IgG

Purification

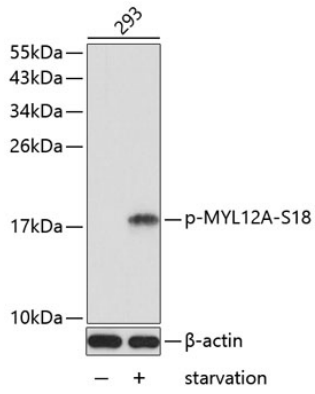
Affinity purification

Storage

Store at -20°C. Avoid freeze / thaw cycles.

Buffer: PBS with 0.02% sodium azide, 50% glycerol, pH 7.3.

Validation Data



Western blot analysis of lysates from 293 cells, using Phospho-MYL12A-S18 Rabbit pAb (AP0412). 293 cells treated with starvation.
Secondary antibody: HRP-conjugated Goat anti-Rabbit IgG (H+L) (AS014) at 1:10000 dilution.
Lysates/proteins: 25 μ g per lane.
Blocking buffer: 3% BSA.