

# Phospho-NBS1/NBN-S343 Rabbit pAb

Catalog No.: AP0413 **1 Publications**

## Basic Information

### Observed MW

85kDa

### Calculated MW

85kDa

### Category

Primary antibody

### Applications

WB

### Cross-Reactivity

Human

## Background

Mutations in this gene are associated with Nijmegen breakage syndrome, an autosomal recessive chromosomal instability syndrome characterized by microcephaly, growth retardation, immunodeficiency, and cancer predisposition. The encoded protein is a member of the MRE11/RAD50 double-strand break repair complex which consists of 5 proteins. This gene product is thought to be involved in DNA double-strand break repair and DNA damage-induced checkpoint activation.

## Recommended Dilutions

WB 1:500 - 1:2000

## Immunogen Information

### Gene ID

4683

### Swiss Prot

O60934

### Immunogen

A phospho specific peptide corresponding to residues surrounding S343 of human NBS1/NBN

### Synonyms

ATV; NBS; P95; NBS1; AT-V1; AT-V2; Phospho-NBS1/NBN-S343

## Contact

☎ | 400-999-6126

✉ | [cn.market@abclonal.com.cn](mailto:cn.market@abclonal.com.cn)

🌐 | [www.abclonal.com.cn](http://www.abclonal.com.cn)

## Product Information

### Source

Rabbit

### Isotype

IgG

### Purification

Affinity purification

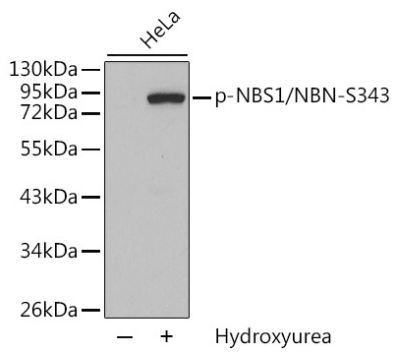
### Storage

Store at -20°C. Avoid freeze / thaw cycles.

Buffer: PBS with 0.02% sodium azide, 50% glycerol, pH 7.3.

## Validation Data

---



Western blot analysis of extracts from HeLa cells, using Phospho-NBS1/NBN-S343 antibody (AP0413).  
Secondary antibody: HRP Goat Anti-Rabbit IgG (H+L) (AS014) at 1:10000 dilution.  
Lysates/proteins: 25µg per lane.  
Blocking buffer: 3% BSA.