

Phospho-NF2-S518 Rabbit pAb

Catalog No.: AP0414

Basic Information

Observed MW

70kDa

Calculated MW

70kDa

Category

Primary antibody

Applications

WB

Cross-Reactivity

Human, Mouse, Rat

Background

This gene encodes a protein that is similar to some members of the ERM (ezrin, radixin, moesin) family of proteins that link cytoskeletal components with proteins in the cell membrane. The encoded protein is involved in regulation of contact-dependent inhibition of cell proliferation and functions in cell-cell adhesion and transmembrane signaling. The encoded protein has been shown to interact with cell-surface proteins, proteins involved in cytoskeletal dynamics, and proteins involved in regulating ion transport. Disruption of this protein's function has been implicated in tumorigenesis and metastasis. Mutations in this gene are associated with neurofibromatosis type II which is characterized by nervous system and skin tumors and ocular abnormalities.

Recommended Dilutions

WB 1:500 - 1:2000

Immunogen Information

Gene ID

4771

Swiss Prot

P35240

Immunogen

A phospho specific peptide corresponding to residues surrounding S518 of human NF2

Synonyms

ACN; SCH; BANF; merlin-1; Phospho-NF2-S518

Contact

☎ | 400-999-6126

✉ | cn.market@abclonal.com.cn

🌐 | www.abclonal.com.cn

Product Information

Source

Rabbit

Isotype

IgG

Purification

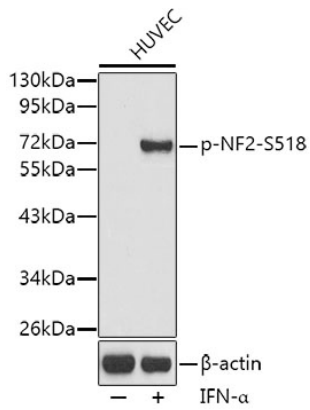
Affinity purification

Storage

Store at -20°C. Avoid freeze / thaw cycles.

Buffer: PBS with 0.02% sodium azide, 50% glycerol, pH7.3.

Validation Data



Western blot analysis of lysates from HUVEC cells, using Phospho-NF2-S518 Rabbit pAb (AP0414).
Secondary antibody: HRP Goat Anti-Rabbit IgG (H+L) (AS014) at 1:10000 dilution.
Lysates/proteins: 25 μ g per lane.
Blocking buffer: 3% BSA.