

# Phospho-PDK1/PDPK1-S241 Rabbit pAb

Catalog No.: AP0426 **3 Publications**

## Basic Information

### Observed MW

58-68kDa

### Calculated MW

63kDa

### Category

Primary antibody

### Applications

ELISA, WB, IF/ICC

### Cross-Reactivity

Human, Mouse, Rat

## Background

Enables 3-phosphoinositide-dependent protein kinase activity; phospholipase activator activity; and phospholipase binding activity. Involved in several processes, including cell surface receptor signaling pathway; regulation of protein kinase activity; and regulation of signal transduction. Acts upstream of or within intracellular signal transduction. Located in cell projection; cytosol; and plasma membrane. Implicated in prostate cancer. Biomarker of lung non-small cell carcinoma.

## Recommended Dilutions

**WB** 1:500 - 1:2000

**IF/ICC** 1:100 - 1:200

## Immunogen Information

### Gene ID

5170

### Swiss Prot

O15530

### Immunogen

A phospho specific peptide corresponding to residues surrounding S241 of human PDK1/PDPK1

### Synonyms

PDK1; PDPK2; PDPK2P; PRO0461; Phospho-PDK1/PDPK1-S241

## Contact

☎ | 400-999-6126

✉ | [cn.market@abclonal.com.cn](mailto:cn.market@abclonal.com.cn)

🌐 | [www.abclonal.com.cn](http://www.abclonal.com.cn)

## Product Information

### Source

Rabbit

### Isotype

IgG

### Purification

Affinity purification

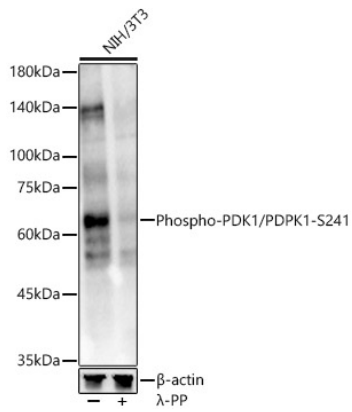
### Storage

Store at -20°C. Avoid freeze / thaw cycles.

Buffer: PBS with 0.02% sodium azide, 50% glycerol, pH7.3.

## Validation Data

---



Western blot analysis of lysates from NIH/3T3 cells, using Phospho-PDK1/PDPK1-S241 Rabbit pAb (AP0426) at 1:1000 dilution. NIH/3T3 cells were treated by  $\lambda$ -PP mixed solution (1ul) at 30°C for 30 minutes.

Secondary antibody: HRP-conjugated Goat anti-Rabbit IgG (H+L) (AS014) at 1:10000 dilution.

Lysates/proteins: 25 $\mu$ g per lane.

Blocking buffer: 3% nonfat dry milk in TBST.

Detection: ECL Enhanced Kit (RM00021).

Exposure time: 30s.