

Phospho- α -Synuclein-S129 Rabbit pAb

Catalog No.: AP0450

Basic Information

Observed MW

20kDa

Calculated MW

14kDa

Category

Primary antibody

Applications

WB,IF/ICC,ELISA

Cross-Reactivity

Human, Mouse, Rat

Background

Alpha-synuclein is a member of the synuclein family, which also includes beta- and gamma-synuclein. Synucleins are abundantly expressed in the brain and alpha- and beta-synuclein inhibit phospholipase D2 selectively. SNCA may serve to integrate presynaptic signaling and membrane trafficking. Defects in SNCA have been implicated in the pathogenesis of Parkinson disease. SNCA peptides are a major component of amyloid plaques in the brains of patients with Alzheimer's disease. Alternatively spliced transcripts encoding different isoforms have been identified for this gene.

Recommended Dilutions

WB 1:500 - 1:2000

IF/ICC 1:100-1:500

ELISA Recommended starting concentration is 1 μ g/mL. Please optimize the concentration based on your specific assay requirements.

Immunogen Information

Gene ID

6622

Swiss Prot

P37840

Immunogen

Synthetic peptide. This information is considered to be commercially sensitive.

Synonyms

PD1; NACP; PARK1; PARK4; Phospho- α -Synuclein-S129

Contact

☎ | 400-999-6126

✉ | cn.market@abclonal.com.cn

🌐 | www.abclonal.com.cn

Product Information

Source

Rabbit

Isotype

IgG

Purification

Affinity purification

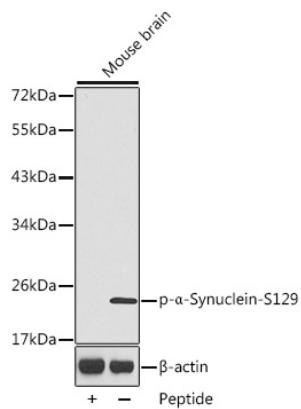
Storage

Store at -20°C. Avoid freeze / thaw cycles.

Buffer: PBS, pH 7.3, containing 50% glycerol. Preserved with Proclin300 or sodium azide.

May contain 0.05% BSA as specified on the Certificate of Analysis.

Validation Data

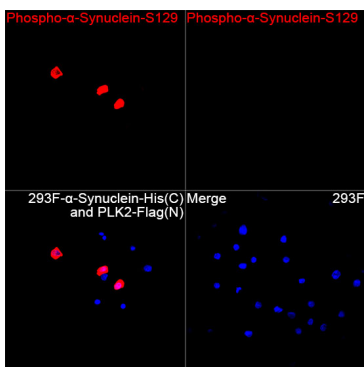


Western blot analysis of lysates from mouse brain tissue, using Phospho- α -Synuclein-S129 Rabbit pAb (AP0450).

Secondary antibody: HRP-conjugated Goat anti-Rabbit IgG (H+L) (AS014) at 1:10000 dilution.

Lysates/proteins: 25 μ g per lane.

Blocking buffer: 3% BSA.



Immunofluorescence analysis of 293F cells transfected with α -Synuclein-His(C) and PLK2-Flag(N) using Phospho- α -Synuclein-S129 Rabbit pAb (AP0450) at a dilution of 1:100 (40x lens). Secondary antibody: Cy3-conjugated Goat anti-Rabbit IgG (H+L) (AS007) at 1:500 dilution Blue: DAPI for nuclear staining.