

Phospho-STAT1-S727 Rabbit pAb

Catalog No.: AP0453

3 Publications

Basic Information

Observed MW

87kDa

Calculated MW

87kDa

Category

Primary antibody

Applications

ELISA, WB, IHC-P, IF/ICC

Cross-Reactivity

Human, Mouse, Rat

Background

The protein encoded by this gene is a member of the STAT protein family. In response to cytokines and growth factors, STAT family members are phosphorylated by the receptor associated kinases, and then form homo- or heterodimers that translocate to the cell nucleus where they act as transcription activators. The protein encoded by this gene can be activated by various ligands including interferon-alpha, interferon-gamma, EGF, PDGF and IL6. This protein mediates the expression of a variety of genes, which is thought to be important for cell viability in response to different cell stimuli and pathogens. The protein plays an important role in immune responses to viral, fungal and mycobacterial pathogens. Mutations in this gene are associated with Immunodeficiency 31B, 31A, and 31C.

Recommended Dilutions

WB	1:500 - 1:2000
IHC-P	1:50 - 1:100
IF/ICC	1:100 - 1:200

Immunogen Information

Gene ID

6772

Swiss Prot

P42224

Immunogen

A synthetic phosphorylated peptide around S727 of human STAT1 (NP_009330.1).

Synonyms

CANDF7; IMD31A; IMD31B; IMD31C; ISGF-3; STAT91; Phospho-STAT1-S727

Contact

	400-999-6126
	cn.market@abclonal.com.cn
	www.abclonal.com.cn

Product Information

Source

Rabbit

Isotype

IgG

Purification

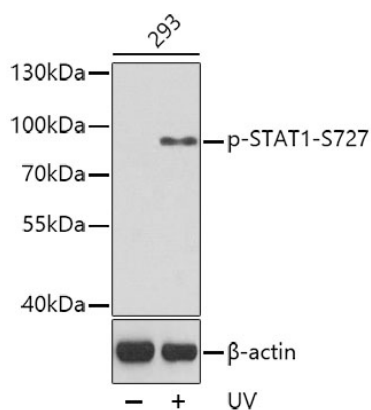
Affinity purification

Storage

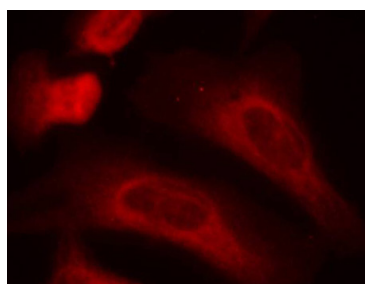
Store at -20°C. Avoid freeze / thaw cycles.

Buffer: PBS with 0.01% thimerosal, 50% glycerol, pH7.3.

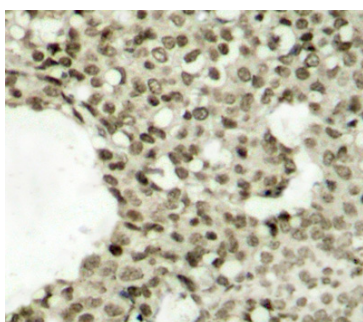
Validation Data



Western blot analysis of lysates from 293 cells, using Phospho-STAT1-S727 Rabbit pAb (AP0453).
Secondary antibody: HRP Goat Anti-Rabbit IgG (H+L) (AS014) at 1:10000 dilution.
Lysates/proteins: 25µg per lane.
Blocking buffer: 3% BSA.



Immunofluorescence analysis of methanol-fixed HeLa cells using Phospho-STAT1-S727 Rabbit pAb (AP0453).



Immunohistochemistry analysis of Phospho-STAT1-S727 in paraffin-embedded human breast carcinoma tissue, using Phospho-STAT1-S727 Rabbit pAb (AP0453). Perform microwave antigen retrieval with 10 mM Tris/EDTA buffer pH 9.0 before commencing with IHC staining protocol.