

# Phospho-STAT1-S727 Rabbit pAb

Catalog No.: AP0453SP **6 Publications**

## Basic Information

### Observed MW

91 kDa

### Calculated MW

87 kDa/83 kDa

### Category

Primary antibody

### Applications

WB,IF/ICC,IHC-P,ELISA

### Cross-Reactivity

Human, Mouse, Rat

## Background

The protein encoded by this gene is a member of the STAT protein family. In response to cytokines and growth factors, STAT family members are phosphorylated by the receptor associated kinases, and then form homo- or heterodimers that translocate to the cell nucleus where they act as transcription activators. The protein encoded by this gene can be activated by various ligands including interferon-alpha, interferon-gamma, EGF, PDGF and IL6. This protein mediates the expression of a variety of genes, which is thought to be important for cell viability in response to different cell stimuli and pathogens. The protein plays an important role in immune responses to viral, fungal and mycobacterial pathogens. Mutations in this gene are associated with Immunodeficiency 31B, 31A, and 31C.

## Recommended Dilutions

**WB** 1:2000 - 1:10000

**IF/ICC** 1:1000 - 1:4000

**IHC-P** 1:300 - 1:1200

**ELISA** Recommended starting concentration is 1 µg/mL. Please optimize the concentration based on your specific assay requirements. For high-ratio antibody dilutions (≥1:10000) a sequential dilution method is strongly recommended to ensure measurement accuracy.

## Immunogen Information

### Gene ID

6772

### Swiss Prot

P42224

### Immunogen

Synthetic peptide. This information is considered to be commercially sensitive.

### Synonyms

CANDF7; IMD31A; IMD31B; IMD31C; ISGF-3; STAT91

## Product Information

### Source

Rabbit

### Isotype

IgG

### Purification

Affinity purification

### Storage

Store at -20°C. Avoid freeze / thaw cycles.

Buffer: PBS, pH 7.3, containing 50% glycerol. Preserved with Proclin300 or sodium azide.

May contain 0.05% BSA as specified on the Certificate of Analysis.

## Contact

---

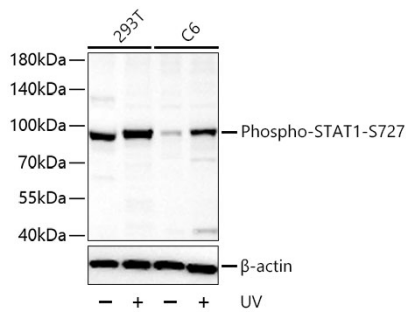
 | 400-999-6126

 | [cn.market@abclonal.com.cn](mailto:cn.market@abclonal.com.cn)

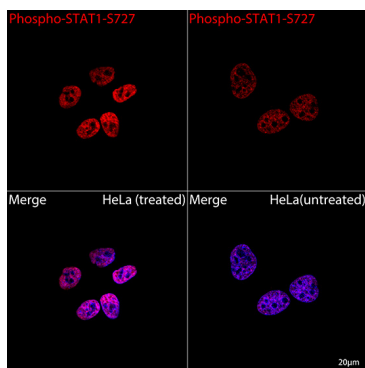
 | [www.abclonal.com.cn](http://www.abclonal.com.cn)

---

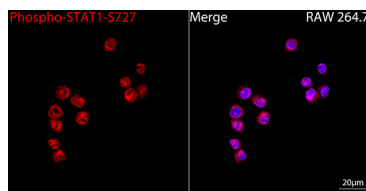
## Validation Data



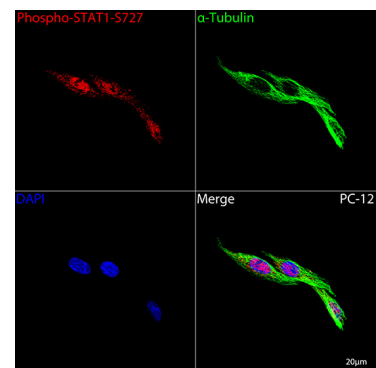
Western blot analysis of various lysates using Phospho-STAT1-S727 Rabbit pAb (AP0453SP) at 1:10000 dilution incubated overnight at 4°C. 293T cells were treated with UV (90mj/cm<sup>2</sup>) at 37°C for 30min, C6 cells were treated with UV (90mj/cm<sup>2</sup>) at 37°C for 30min. Secondary antibody: HRP-conjugated Goat anti-Rabbit IgG (H+L) (AS014) at 1:10000 dilution. Lysates/proteins: 30 µg per lane. Blocking buffer: 3% nonfat dry milk in TBST. Detection: ECL Basic Kit (RM00020). Exposure time: 30 s.



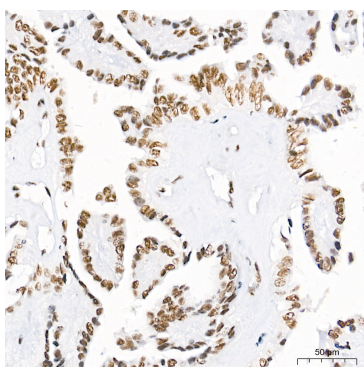
Confocal imaging of HeLa cells (treated with hIFN-α1) and HeLa cells (untreated) using Phospho-STAT1-S727 Rabbit pAb (AP0453SP, dilution 1:2000) followed by a further incubation with Cy3-conjugated Goat anti-Rabbit IgG (H+L) (AS007, dilution 1:500) (Red). DAPI was used for nuclear staining (Blue). Objective: 100x.



Confocal imaging of RAW 264.7 cells using Phospho-STAT1-S727 Rabbit pAb (AP0453SP, dilution 1:2000) followed by a further incubation with Cy3-conjugated Goat anti-Rabbit IgG (H+L) (AS007, dilution 1:500) (Red). DAPI was used for nuclear staining (Blue). Objective: 100x.



Confocal imaging of PC-12 cells using Phospho-STAT1-S727 Rabbit pAb (AP0453SP, dilution 1:2000) followed by a further incubation with Cy3-conjugated Goat anti-Rabbit IgG (H+L) (AS007, dilution 1:500) (Red). The cells were counterstained with α-Tubulin Mouse mAb (AC012, dilution 1:400) followed by incubation with ABflo® 488-conjugated Goat Anti-Mouse IgG (H+L) Ab (AS076, dilution 1:500) (Green). DAPI was used for nuclear staining (Blue). Objective: 100x.



Immunohistochemistry analysis of paraffin-embedded Human thyroid cancer tissue using Phospho-STAT1-S727 Rabbit pAb (AP0453SP) at a dilution of 1:300 (40x lens). High pressure antigen retrieval performed with 0.01M Citrate Buffer (pH 6.0) prior to IHC staining.