

Phospho-RB-S807/811 Rabbit pAb

Catalog No.: AP0484SP **6 Publications**

Basic Information

Observed MW

110 kDa

Calculated MW

106 kDa

Category

Primary antibody

Applications

WB,IP,IF/ICC,IF-P,ELISA

Cross-Reactivity

Human, Mouse

Background

The protein encoded by this gene is a negative regulator of the cell cycle and was the first tumor suppressor gene found. The encoded protein also stabilizes constitutive heterochromatin to maintain the overall chromatin structure. The active, hypophosphorylated form of the protein binds transcription factor E2F1. Defects in this gene are a cause of childhood cancer retinoblastoma (RB), bladder cancer, and osteogenic sarcoma.

Recommended Dilutions

WB 1:1000 - 1:2000

IP 0.5 µg - 4 µg antibody for
800 µg - 1000 µg
extracts of whole cells

IF/ICC 1:200 - 1:1000

IF-P 1:200 - 1:1000

ELISA Recommended starting concentration is 1 µg/mL. Please optimize the concentration based on your specific assay requirements. For high-ratio antibody dilutions ($\geq 1:10000$) a sequential dilution method is strongly recommended to ensure measurement accuracy.

Immunogen Information

Gene ID

5925

Swiss Prot

P06400

Immunogen

Synthetic peptide. This information is considered to be commercially sensitive.

Synonyms

RB; pRb; OSRC; pp110; p105-Rb; PPP1R130; p110-RB1

Product Information

Source

Rabbit

Isotype

IgG

Purification

Affinity purification

Storage

Store at -20°C. Avoid freeze / thaw cycles.

Buffer: PBS, pH 7.3, containing 50% glycerol. Preserved with Proclin300 or sodium azide.

May contain 0.05% BSA as specified on the Certificate of Analysis.

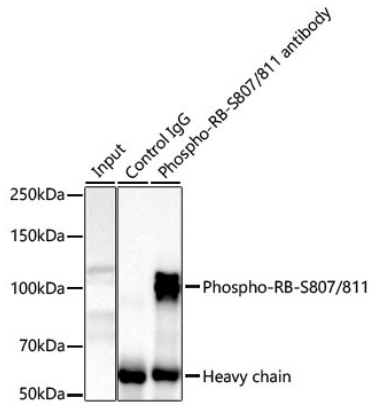
Contact

 | 400-999-6126

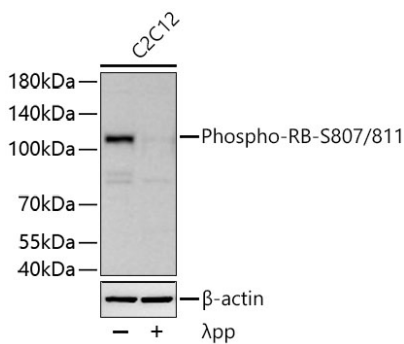
 | cn.market@abclonal.com.cn

 | www.abclonal.com.cn

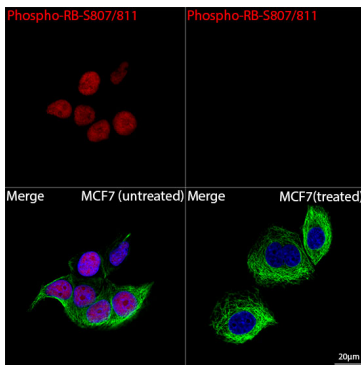
Validation Data



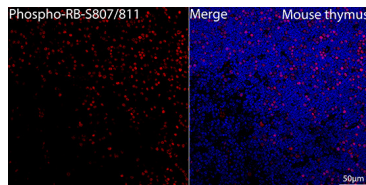
Immunoprecipitation of Phospho-RB-S807/811 from 800 µg extracts of MCF7 cells was performed using 1 µg of Phospho-RB-S807/811 Rabbit pAb (AP0484SP). Rabbit Control IgG (AC005) was used to precipitate the Control IgG sample. IP samples were eluted with 1x reducing Laemmli Buffer. The Input lane represents 10% of the total input. Western blot analysis of immunoprecipitates was conducted using Phospho-RB-S807/811 Rabbit pAb (AP0484SP) at a dilution of 1:1000.



Western blot analysis of lysates from C2C12 cells using Phospho-RB-S807/811 Rabbit pAb (AP0484SP) at 1:1000 dilution incubated overnight at 4°C. C2C12 cells were treated with λpp (100U) at 30°C for 1 hours. Secondary antibody: HRP-conjugated Goat anti-Rabbit IgG (H+L) (AS014) at 1:10000 dilution. Lysates/proteins: 25 µg per lane. Blocking buffer: 3% nonfat dry milk in TBST. Detection: ECL Basic Kit (RM00020). Exposure time: 90 s.



Confocal imaging of MCF7 cells (untreated) and MCF7 cells (treated with λPP) using Phospho-RB-S807/811 Rabbit pAb (AP0484SP, dilution 1:900) followed by a further incubation with Cy3-conjugated Goat anti-Rabbit IgG (H+L) (AS007, dilution 1:500) (Red). The cells were counterstained with α-Tubulin Mouse mAb (AC012, dilution 1:400) followed by incubation with ABflo® 488-conjugated Goat Anti-Mouse IgG (H+L) Ab (AS076, dilution 1:500) (Green). DAPI was used for nuclear staining (Blue). Objective: 100x.



Confocal imaging of paraffin-embedded Mouse thymus tissue using Phospho-RB-S807/811 Rabbit pAb (AP0484SP, dilution 1:900) followed by a further incubation with Cy3-conjugated Goat anti-Rabbit IgG (H+L) (AS007, dilution 1:500) (Red). DAPI was used for nuclear staining (Blue). High pressure antigen retrieval performed with 0.01M Citrate Buffer (pH 6.0) prior to IF staining. Objective: 40x.