

Phospho-YAP1-S127 Rabbit pAb

Catalog No.: AP0489SP **42 Publications**

Basic Information

Observed MW

65-78 kDa

Calculated MW

36-55 kDa

Category

Primary antibody

Applications

WB, IHC-P, ELISA

Cross-Reactivity

Human, Mouse, Rat

Background

This gene encodes a downstream nuclear effector of the Hippo signaling pathway which is involved in development, growth, repair, and homeostasis. This gene is known to play a role in the development and progression of multiple cancers as a transcriptional regulator of this signaling pathway and may function as a potential target for cancer treatment. Alternative splicing results in multiple transcript variants encoding different isoforms.

Recommended Dilutions

WB 1:5000 - 1:25000**IHC-P** 1:500 - 1:2000

ELISA Recommended starting concentration is 1 µg/mL. Please optimize the concentration based on your specific assay requirements. For high-ratio antibody dilutions ($\geq 1:10000$) a sequential dilution method is strongly recommended to ensure measurement accuracy.

Immunogen Information

Gene ID

10413

Swiss Prot

P46937

Immunogen

Synthetic peptide. This information is considered to be commercially sensitive.

Synonyms

YAP; YKI; COB1; YAP2; YAP-1; YAP65

Product Information

Source

Rabbit

Isotype

IgG

Purification

Affinity purification

Storage

Store at -20°C. Avoid freeze / thaw cycles.

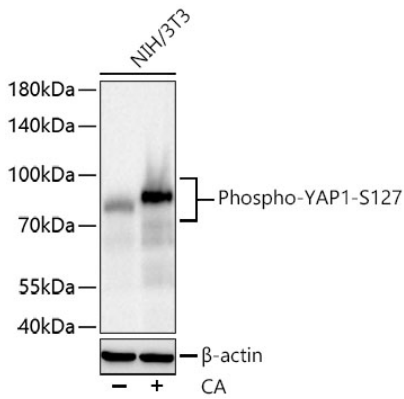
Buffer: PBS, pH 7.3, containing 50% glycerol. Preserved with Proclin300 or sodium azide.

May contain 0.05% BSA as specified on the Certificate of Analysis.

Contact

 | 400-999-6126 | cn.market@abclonal.com.cn | www.abclonal.com.cn

Validation Data



Western blot analysis of lysates from NIH/3T3 cells using Phospho-YAP1-S127 Rabbit pAb (AP0489SP) at 1:25000 dilution incubated overnight at 4°C. NIH/3T3 cells were treated with CA (100nM) at 37°C for 30min.

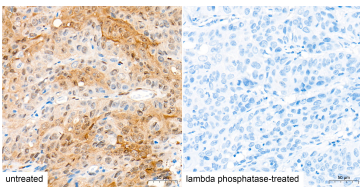
Secondary antibody: HRP-conjugated Goat anti-Rabbit IgG (H+L) (AS014) at 1:10000 dilution.

Lysates/proteins: 30 µg per lane.

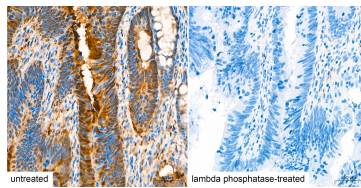
Blocking buffer: 3% nonfat dry milk in TBST.

Detection: ECL Basic Kit (RM00020).

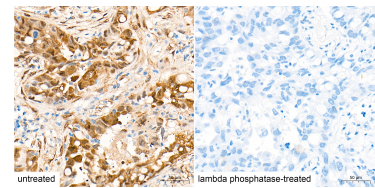
Exposure time: 30 s.



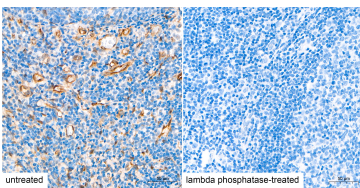
Immunohistochemistry analysis of paraffin-embedded Human cervix cancer tissue, untreated (left) and lambda phosphatase-treated (right), using Phospho-YAP1-S127 Rabbit pAb (AP0489SP) at a dilution of 1:1000 (40x lens). High pressure antigen retrieval performed with 0.01M Citrate Buffer (pH 6.0) prior to IHC staining.



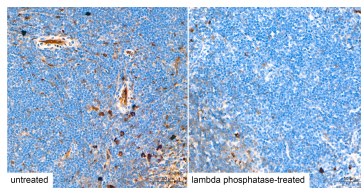
Immunohistochemistry analysis of paraffin-embedded Human colon carcinoma tissue, untreated (left) and lambda phosphatase-treated (right), using Phospho-YAP1-S127 Rabbit pAb (AP0489SP) at a dilution of 1:1000 (40x lens). High pressure antigen retrieval performed with 0.01M Citrate Buffer (pH 6.0) prior to IHC staining.



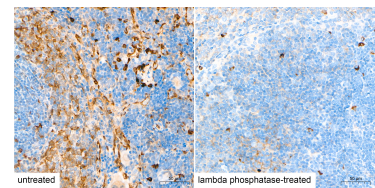
Immunohistochemistry analysis of paraffin-embedded Human lung cancer tissue, untreated (left) and lambda phosphatase-treated (right), using Phospho-YAP1-S127 Rabbit pAb (AP0489SP) at a dilution of 1:1000 (40x lens). High pressure antigen retrieval performed with 0.01M Citrate Buffer (pH 6.0) prior to IHC staining.



Immunohistochemistry analysis of paraffin-embedded Human tonsil tissue, untreated (left) and lambda phosphatase-treated (right), using Phospho-YAP1-S127 Rabbit pAb (AP0489SP) at a dilution of 1:1000 (40x lens). High pressure antigen retrieval performed with 0.01M Citrate Buffer (pH 6.0) prior to IHC staining.



Immunohistochemistry analysis of paraffin-embedded Mouse spleen tissue, untreated (left) and lambda phosphatase-treated (right), using Phospho-YAP1-S127 Rabbit pAb (AP0489SP) at a dilution of 1:1000 (40x lens). High pressure antigen retrieval performed with 0.01M Citrate Buffer (pH 6.0) prior to IHC staining.



Immunohistochemistry analysis of paraffin-embedded Rat spleen tissue, untreated (left) and lambda phosphatase-treated (right), using Phospho-YAP1-S127 Rabbit pAb (AP0489SP) at a dilution of 1:1000 (40x lens). High pressure antigen retrieval performed with 0.01M Citrate Buffer (pH 6.0) prior to IHC staining.